



**ELECTRONIC COPY**

## LABORATORY GROWN DIAMOND REPORT

|                         |                          |
|-------------------------|--------------------------|
| December 10, 2025       |                          |
| IGI Report Number       | LG754582920              |
| Description             | LABORATORY GROWN DIAMOND |
| Shape and Cutting Style | ROUND BRILLIANT          |
| Measurements            | 6.54 - 6.56 X 4.04 MM    |

## GRADING RESULTS

|               |            |
|---------------|------------|
| Carat Weight  | 1.06 CARAT |
| Color Grade   | F          |
| Clarity Grade | VVS 2      |
| Cut Grade     | IDEAL      |

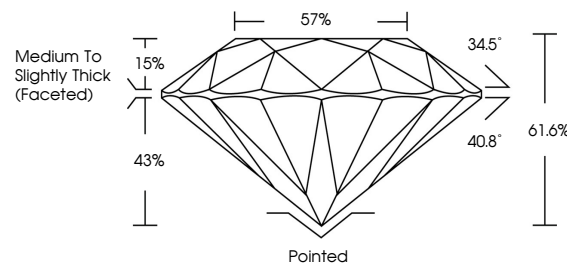
### ADDITIONAL GRADING INFORMATION

|                |                |
|----------------|----------------|
| Polish         | EXCELLENT      |
| Symmetry       | EXCELLENT      |
| Fluorescence   | NONE           |
| Inscription(s) | 15 LG754582920 |

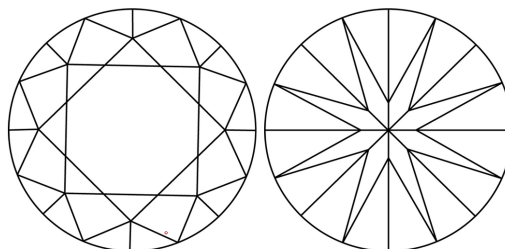
Comments: As Grown - No indication of post-growth treatment.  
This Laboratory Grown Diamond was created by High Pressure High Temperature (HPHT) growth process.  
Type II

LG754582920  
Report verification at [lgi.org](https://lgi.org)

## PROPORTIONS

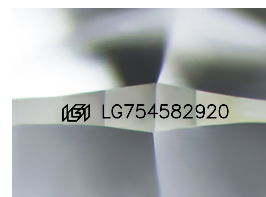


## CLARITY CHARACTERISTICS



## KEY TO SYMBOLS

Red symbols indicate internal characteristics.  
Green symbols indicate external characteristics.



Sample Image Used

## COLOR

D E F G H I J Faint Very Light Light

## CLARITY

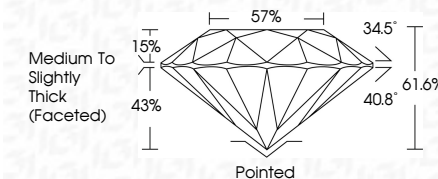
| FL       | IF                  | VVS <sup>1-2</sup>          | VS <sup>1-2</sup>      | SI <sup>1-2</sup> | I <sup>1-3</sup> |
|----------|---------------------|-----------------------------|------------------------|-------------------|------------------|
| Flawless | Internally Flawless | Very Very Slightly Included | Very Slightly Included | Slightly Included | Included         |



|                         |                          |
|-------------------------|--------------------------|
| December 10, 2025       |                          |
| IGI Report Number       | LG754582920              |
| Description             | LABORATORY GROWN DIAMOND |
| Shape and Cutting Style | ROUND BRILLIANT          |
| Measurements            | 6.54 - 6.56 X 4.04 MM    |

## GRADING RESULTS

|               |            |
|---------------|------------|
| Carat Weight  | 1.06 CARAT |
| Color Grade   | F          |
| Clarity Grade | VVS 2      |
| Cut Grade     | IDEAL      |



### ADDITIONAL GRADING INFORMATION

|  |                            |
|--|----------------------------|
| Polish   | EXCELLENT                  |
| Symmetry   | EXCELLENT                  |
| Fluorescence   | NONE                       |
| Inscription(s)   | <del>(G)</del> LG754582920 |
| Comments: As Grown - No indication of post-growth treatment.                                       |                            |
| This Laboratory Grown Diamond was created by High Pressure High Temperature (HPHT) growth process. |                            |
| Type II  |                            |



© IGI 2020, International Gemological Institute

FD - 10 20



THIS DOCUMENT WAS PRODUCED WITH THE FOLLOWING SECURITY MEASURES: SPECIAL DOCUMENT PAPER, INK SCREENS, WATERMARK, BACKGROUND DESIGNS, HOLOGRAM AND OTHER SECURITY FEATURES NOT LISTED AND DO EXCEED DOCUMENT SECURITY INDUSTRY GUIDELINES

**www.igi.org**

December 10, 2025  
IGI Report No LG754582920  
ROUND BRILLIANT

|               |                                    |
|---------------|------------------------------------|
| Carat Weight  | 1.06 CARAT                         |
| Color Grade   | F                                  |
| Clarity Grade | VVS 2                              |
| Cut Grade     | IDEAL                              |
| Depth         | 61.6%                              |
| Table         | 57%                                |
| Girdle        | Medium to Slightly Thick (Faceted) |
| Culet         | Pointed                            |
| Polish        | EXCELLENT                          |
| Symmetry      | EXCELLENT                          |
| Fluorescence  | NONE                               |
| Report #      | 1C7274592024                       |

**Comments:**  
As Grown - No indication of post-growth treatment.  
This Laboratory Grown Diamond was created by High Pressure High Temperature (HPHT) growth process.