



ELECTRONIC COPY

LABORATORY GROWN DIAMOND REPORT

December 6, 2025	
IGI Report Number	LG754581825
Description	LABORATORY GROWN DIAMOND
Shape and Cutting Style	ROUND BRILLIANT
Measurements	8.58 - 8.64 X 5.38 MM

GRADING RESULTS

Carat Weight	2.50 CARATS
Color Grade	E
Clarity Grade	VS 2
Cut Grade	EXCELLENT

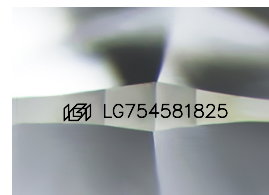
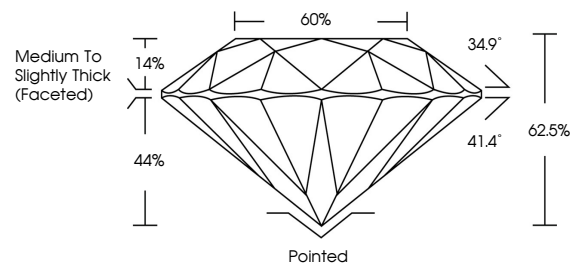
ADDITIONAL GRADING INFORMATION

Polish	EXCELLENT
Symmetry	EXCELLENT
Fluorescence	NONE
Inscription(s)	 LG754581825

Comments: This Laboratory Grown Diamond was created by Chemical Vapor Deposition (CVD) growth process.
Type IIa

LG754581825
Report verification at igi.org

PROPORTIONS



Sample Image Used

COLOR

D E F G H I J Faint Very Light Light

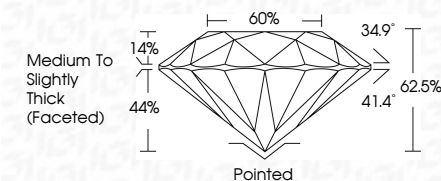
CLARITY

FL	IF	VVS ¹⁻²	VS ¹⁻²	SI ¹⁻²	I ¹⁻³
Flawless	Internally Flawless	Very Very Slightly Included	Very Slightly Included	Slightly Included	Included

LABORATORY GROWN DIAMOND REPORT



December 6, 2025	
IGI Report Number	LG754581825
Description	LABORATORY GROWN DIAMOND
Shape and Cutting Style	ROUND BRILLIANT
Measurements	8.58 - 8.64 X 5.38 MM
GRADING RESULTS	
Carat Weight	2.50 CARATS
Color Grade	E
Clarity Grade	VS 2
Cut Grade	EXCELLENT



ADDITIONAL GRADING INFORMATION

Polish	EXCELLENT
Symmetry	EXCELLENT
Fluorescence	NONE
Inscription(s)	 LG754581825
<p>Comments: This Laboratory Grown Diamond was created by Chemical Vapor Deposition (CVD) growth process.</p> <p>Type IIa</p>	



© IGI 2020, International Gemological Institute

FD - 10 20

www.igi.org



THIS DOCUMENT WAS PRODUCED WITH THE FOLLOWING SECURITY MEASURES: SPECIAL DOCUMENT PAPER, INK SCREENS, WATERMARK, BACKGROUND DESIGNS, HOLOGRAM AND OTHER SECURITY FEATURES NOT LISTED AND DO EXCEED DOCUMENT SECURITY INDUSTRY GUIDELINES

December 4, 2025	Carat Weight		2.80 CARATS
GJ Report No. LG754681 B25	Color Grade	E	
ROUND BRILLIANT	Clarity Grade	VS 2	
6.56 - 6.41 X 5.38 MM	Cut Grade	EXCELLENT	
	Depth	62.5%	
	Table	65%	
	Grainle	Medium to Slightly Thick Faceted	
	Culet	Pointed	
	Polish	EXCELLENT	
	Symmetry	EXCELLENT	
	Fluorescence	NONE	
	Inscriptions(s)	lgf LG754681 B25	

Comments: This Laboratory Grown Diamond was created by Chemical Vapor Deposition process.

Type IIc