



**ELECTRONIC COPY**

## LABORATORY GROWN DIAMOND REPORT

LG754580897  
Report verification at [igi.org](https://igi.org)

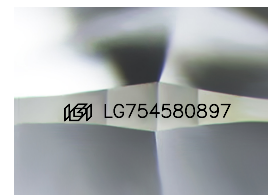
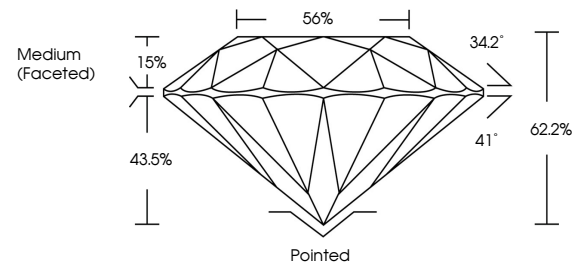
December 6, 2025	
IGI Report Number	LG754580897
Description	LABORATORY GROWN DIAMOND
Shape and Cutting Style	ROUND BRILLIANT
Measurements	8.71 - 8.76 X 5.43 MM
GRADING RESULTS	
Carat Weight	2.56 CARATS
Color Grade	E
Clarity Grade	VVS 2
Cut Grade	IDEAL

### ADDITIONAL GRADING INFORMATION

Polish	EXCELLENT
Symmetry	EXCELLENT
Fluorescence	NONE
Inscription(s)	 LG754580897

Comments: This Laboratory Grown Diamond was created by Chemical Vapor Deposition (CVD) growth process.  
Type IIa

## PROPORTIONS



Sample Image Used

## COLOR

D E F G H I J Faint Very Light Light

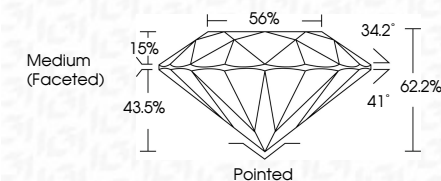
## CLARITY

FL	IF	VVS <sup>1-2</sup>	VS <sup>1-2</sup>	SI <sup>1-2</sup>	I <sup>1-3</sup>
Flawless	Internally Flawless	Very Very Slightly Included	Very Slightly Included	Slightly Included	Included

## LABORATORY GROWN DIAMOND REPORT



December 6, 2025	
IGI Report Number	LG754580897
Description	LABORATORY GROWN DIAMOND
Shape and Cutting Style	ROUND BRILLIANT
Measurements	8.71 - 8.76 X 5.43 MM
GRADING RESULTS	
Carat Weight	2.56 CARATS
Color Grade	E
Clarity Grade	VVS 2
Cut Grade	IDEAL



### ADDITIONAL GRADING INFORMATION

Polish	EXCELLENT
Symmetry	EXCELLENT
Fluorescence	NONE
Inscription(s)	 LG754580897
<p>Comments: This Laboratory Grown Diamond was created by Chemical Vapor Deposition (CVD) growth process.</p> <p>Type IIa</p>	



© IGI 2020, International Gemological Institute

FD - 10 20



THIS DOCUMENT WAS PRODUCED WITH THE FOLLOWING SECURITY MEASURES: SPECIAL DOCUMENT PAPER, INK SCREENS, WATERMARK, BACKGROUND DESIGNS, HOLOGRAM, AND OTHER SECURITY FEATURES NOT LISTED AND DO EXCEED DOCUMENT SECURITY INDUSTRY GUIDELINES.

**www.igi.org**

December 6, 2025  
 IGI Report No LG7544  
 ROUND BRILLIANT

8.71 - 8.76 X 5.43 MM

3.71 - 8.76 X 5.43 MM	2.56 CARATS
Carat Weight	

Catalytic Weight II	ZnO Carats
Color Grade	E

Clarity Grade	WS 2
---------------	------

Quality Grade	VS2	IDEAL
Cut Grade		

Depth 62.2%

Table	56%
Girdle	Medium (5 weeks)

Girdle

	Culet	Pointed
1		
2		
3		
4		
5		
6		
7		
8		
9		
10		
11		
12		
13		
14		
15		
16		
17		
18		
19		
20		
21		
22		
23		
24		
25		
26		
27		
28		
29		
30		
31		
32		
33		
34		
35		
36		
37		
38		
39		
40		
41		
42		
43		
44		
45		
46		
47		
48		
49		
50		
51		
52		
53		
54		
55		
56		
57		
58		
59		
60		
61		
62		
63		
64		
65		
66		
67		
68		
69		
70		
71		
72		
73		
74		
75		
76		
77		
78		
79		
80		
81		
82		
83		
84		
85		
86		
87		
88		
89		
90		
91		
92		
93		
94		
95		
96		
97		
98		
99		
100		

Culet	Pointed
Polish	EXCELLENT

EXCELLENT

EXCELLENT

Symmetry

Fluorescence	NONE
450   C7541590907	

Inscription(s)	151 LG754580897

Comments:  
Title Laboratory: Crayon Norm and 1,000

This Laboratory Grown Diamond was created by Chemical Vapor Deposition

created by Chemical Vapor Deposition (CVD) growth process, Type IIa

Type IIa