

**ELECTRONIC COPY**

## LABORATORY GROWN DIAMOND REPORT

LG754580403  
Report verification at [igi.org](https://igi.org)

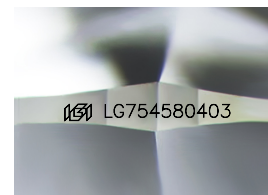
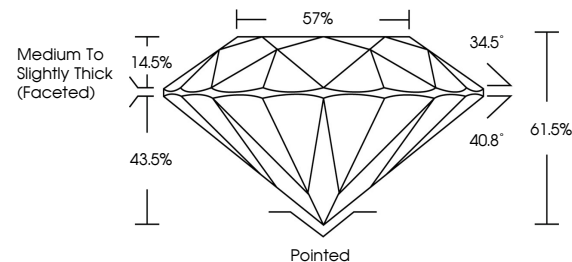
December 12, 2025	
IGI Report Number	LG754580403
Description	LABORATORY GROWN DIAMOND
Shape and Cutting Style	ROUND BRILLIANT
Measurements	6.75 - 6.54 X 4.02 MM
GRADING RESULTS	
Carat Weight	1.06 CARAT
Color Grade	D
Clarity Grade	VS 1
Cut Grade	IDEAL

### ADDITIONAL GRADING INFORMATION

Polish	EXCELLENT
Symmetry	EXCELLENT
Fluorescence	NONE
Inscription(s)	151 LG754580403

Comments: As Grown - No indication of post-growth treatment.  
This Laboratory Grown Diamond was created by High Pressure High Temperature (HPHT) growth process.  
Type II

## PROPORTIONS



Sample Image Used

## COLOR

D E F G H I J Faint Very Light Light

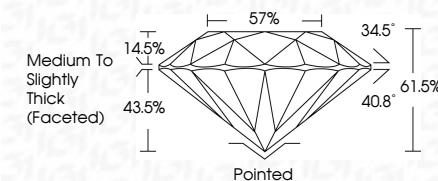
## CLARITY

FL	IF	VVS <sup>1-2</sup>	VS <sup>1-2</sup>	SI <sup>1-2</sup>	I <sup>1-3</sup>
Flawless	Internally Flawless	Very Very Slightly Included	Very Slightly Included	Slightly Included	Included

## LABORATORY GROWN DIAMOND REPORT



December 12, 2025	
IGI Report Number	LG754580403
Description	LABORATORY GROWN DIAMOND
Shape and Cutting Style	ROUND BRILLIANT
Measurements	6.75 - 6.54 X 4.02 MM
GRADING RESULTS	
Carat Weight	1.06 CARAT
Color Grade	D
Clarity Grade	VS 1
Cut Grade	IDEAL



### ADDITIONAL GRADING INFORMATION

Polish	EXCELLENT
Symmetry	EXCELLENT
Fluorescence	NONE
Inscription(s)	<del>(G)</del> LG754580403
Comments: As Grown - No indication of post-growth treatment.	
This Laboratory Grown Diamond was created by High Pressure High Temperature (HPHT) growth process.	
Type II	



December 12, 2025  
IGI Report No LG754580403  
ROUND BRILLIANT

6.75 - 6.64 X 4.02 MM	Carat Weight	1.06 CARAT
	Color Grade	D
	Clarity Grade	VS 1
	Cut Grade	IDEAL
	Depth	61.65%
	Table	57%
	Girdle	Medium to Slightly Thick (Faceted)
	Culet	Pointed
	Polish	EXCELLENT
	Symmetry	EXCELLENT
	Fluorescence	NONE
	Report #	1C27645093

**Comments:**  
As Grown - No Indication of post-growth treatment.  
This Laboratory Grown Diamond was created by High Pressure High Temperature (HPHT) growth process.