



**ELECTRONIC COPY**

## LABORATORY GROWN DIAMOND REPORT

LG754580398  
Report verification at [igi.org](https://igi.org)

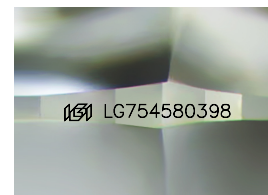
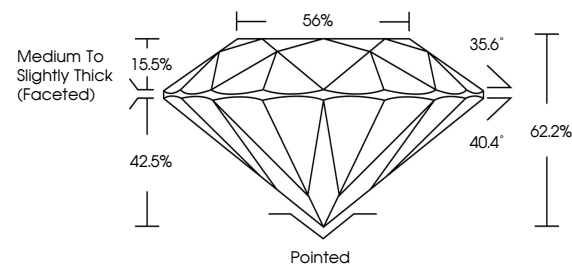
December 15, 2025	
IGI Report Number	LG754580398
Description	LABORATORY GROWN DIAMOND
Shape and Cutting Style	ROUND BRILLIANT
Measurements	6.47 - 6.51 X 4.04 MM
GRADING RESULTS	
Carat Weight	1.06 CARAT
Color Grade	D
Clarity Grade	VVS 2
Cut Grade	IDEAL

### ADDITIONAL GRADING INFORMATION

Polish	EXCELLENT
Symmetry	EXCELLENT
Fluorescence	NONE
Inscription(s)	15 LG754580398

Comments: As Grown - No indication of post-growth treatment.  
This Laboratory Grown Diamond was created by High Pressure High Temperature (HPHT) growth process.  
Type II

## PROPORTIONS



Sample Image Used

## COLOR

D E F G H I J Faint Very Light Light

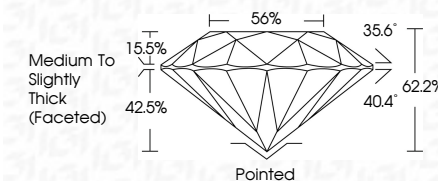
## CLARITY

FL	IF	VVS <sup>1-2</sup>	VS <sup>1-2</sup>	SI <sup>1-2</sup>	I <sup>1-3</sup>
Flawless	Internally Flawless	Very Very Slightly Included	Very Slightly Included	Slightly Included	Included

## LABORATORY GROWN DIAMOND REPORT



December 15, 2025	
IGI Report Number	LG754580398
Description	LABORATORY GROWN DIAMOND
Shape and Cutting Style	ROUND BRILLIANT
Measurements	6.47 - 6.51 X 4.04 MM
GRADING RESULTS	
Carat Weight	1.06 CARAT
Color Grade	D
Clarity Grade	VVS 2
Cut Grade	IDEAL



### ADDITIONAL GRADING INFORMATION

Polish	EXCELLENT
Symmetry	EXCELLENT
Fluorescence	NONE
Inscription(s)	 LG754580398
Comments: As Grown - No indication of post-growth treatment.	
This Laboratory Grown Diamond was created by High Pressure High Temperature (HPHT) growth process.	
Type II	



© IGI 2020, International Gemological Institute

FD - 10 20



THIS DOCUMENT WAS PRODUCED WITH THE FOLLOWING SECURITY MEASURES: SPECIAL DOCUMENT PAPER, INK SCREENS, WATERMARK, BACKGROUND DESIGNS, HOLOGRAM AND OTHER SECURITY FEATURES NOT LISTED AND DO EXCEED DOCUMENT SECURITY INDUSTRY GUIDELINES

**www.igi.org**

December 15, 2025  
LGI Report No LG754580398  
ROUND BRILLIANT

ROUND BRILLIANT  
6.47 - 6.51 X 4.04 MM

5.47 - 6.51 X 4.04 MM  
Carat Weight 1.06 CARAT

Catal Weight II	1.00 Catal
Color Grade	D

Clarity Grade	WS 2
---------------	------

Quality Grade	VS2	IDEAL
Cut Grade		

Depth		62.2%	5.6%
Table			

Table	56%
Girdle	Medium To Slightly

Medium To Slightly Thick (Faceted)

Culet	Pointed
-------	---------

Current	Polished	Excellent
---------	----------	-----------

	EXCELLENT	NONE
Symmetry		
Fluorescence		

Fluorescence	NONE
Inscription(s)	LG754580398

Description (\$) LG/54680398

Comments:  
As Grown - No Indication of post-growth

**As Grown - No indication of post-growth treatment.**

**This Laboratory Grown Diamond was  
Created by High Pressure High  
Temperature (HPHT) growth process.**

Created by High Pressure High Temperature (HPHT) growth process.  
Type II