



**ELECTRONIC COPY**

LG754579333  
Report verification at [igi.org](http://igi.org)



December 4, 2025

IGI Report Number **LG754579333**

Description **LABORATORY GROWN DIAMOND**

Shape and Cutting Style **ROUND BRILLIANT**

Measurements **7.87 - 7.92 X 4.83 MM**

**GRADING RESULTS**

Carat Weight **1.83 CARAT**

Color Grade **D**

Clarity Grade **VVS 2**

Cut Grade **IDEAL**

December 4, 2025

IGI Report Number **LG754579333**

Description **LABORATORY GROWN DIAMOND**

Shape and Cutting Style **ROUND BRILLIANT**

Measurements **7.87 - 7.92 X 4.83 MM**

**GRADING RESULTS**

Carat Weight **1.83 CARAT**

Color Grade **D**

Clarity Grade **VVS 2**

Cut Grade **IDEAL**

**ADDITIONAL GRADING INFORMATION**

Polish **EXCELLENT**

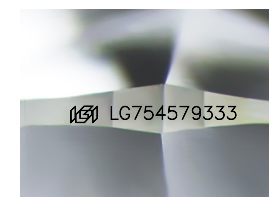
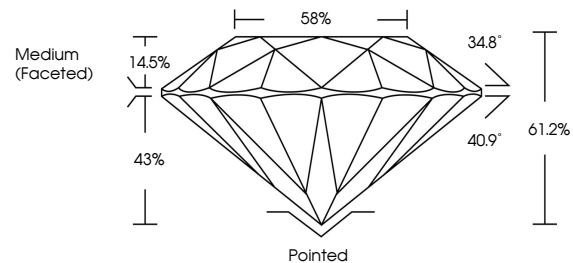
Symmetry **EXCELLENT**

Fluorescence **NONE**

Inscription(s) **LG754579333**

Comments: This Laboratory Grown Diamond was created by Chemical Vapor Deposition (CVD) growth process. Type IIa

**PROPORTIONS**



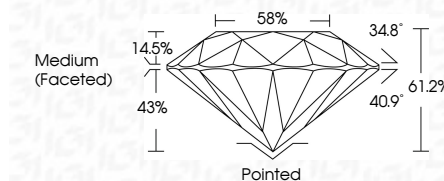
Sample Image Used

**COLOR**

D E F G H I J Faint Very Light Light

**CLARITY**

FL	IF	VVS <sup>1-2</sup>	VS <sup>1-2</sup>	SI <sup>1-2</sup>	I <sup>1-3</sup>
Flawless	Internally Flawless	Very Very Slightly Included	Very Slightly Included	Slightly Included	Included



**ADDITIONAL GRADING INFORMATION**

Polish **EXCELLENT**

Symmetry **EXCELLENT**

Fluorescence **NONE**

Inscription(s) **LG754579333**

Comments: This Laboratory Grown Diamond was created by Chemical Vapor Deposition (CVD) growth process. Type IIa



**IGI**



December 4, 2025	1.83 CARAT	D	Pointed
IGI Report No LG754579333	7.87 - 7.92 X 4.83 MM	VVS 2	EXCELLENT
ROUND BRILLIANT	Color Grade	IDEAL	EXCELLENT
	Clarity Grade	61.2%	NONE
	Depth	43%	NONE
	Table	14.5%	None
	Girdle	Medium (Faceted)	None
	Culet		None
	Polish		None
	Symmetry		None
	Fluorescence		None
	Inscription(s)		None
			None

Comments: This Laboratory Grown Diamond was created by Chemical Vapor Deposition (CVD) growth process. Type IIa