



ELECTRONIC COPY

LG754576764
Report verification at igi.org



January 24, 2026

IGI Report Number **LG754576764**

Description **LABORATORY GROWN DIAMOND**

Shape and Cutting Style **ROUND BRILLIANT**

Measurements **8.14 - 8.17 X 5.13 MM**

GRADING RESULTS

Carat Weight **2.14 CARATS**

Color Grade **E**

Clarity Grade **VVS 2**

Cut Grade **EXCELLENT**

January 24, 2026
IGI Report Number **LG754576764**
Description **LABORATORY GROWN DIAMOND**
Shape and Cutting Style **ROUND BRILLIANT**
Measurements **8.14 - 8.17 X 5.13 MM**

GRADING RESULTS

Carat Weight **2.14 CARATS**

Color Grade **E**

Clarity Grade **VVS 2**

Cut Grade **EXCELLENT**

ADDITIONAL GRADING INFORMATION

Polish **EXCELLENT**

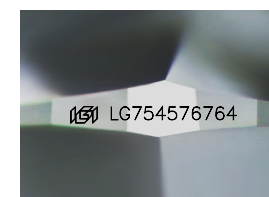
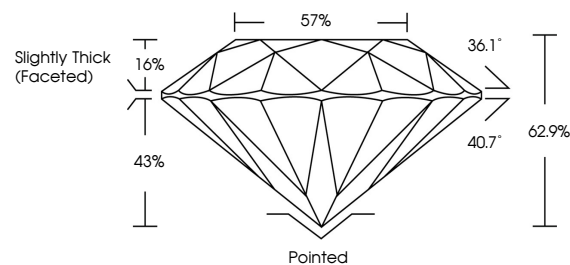
Symmetry **EXCELLENT**

Fluorescence **NONE**

Inscription(s) **IGI LG754576764**

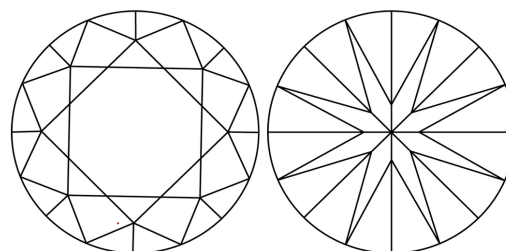
Comments: This Laboratory Grown Diamond was created by Chemical Vapor Deposition (CVD) growth process. Type IIa

PROPORTIONS



Sample Image Used

CLARITY CHARACTERISTICS



KEY TO SYMBOLS

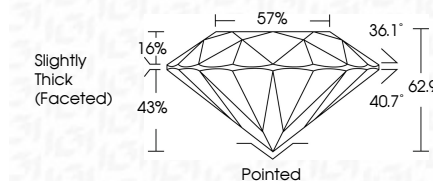
Red symbols indicate internal characteristics.
Green symbols indicate external characteristics.

COLOR

D E F G H I J Faint Very Light Light

CLARITY

FL	IF	VVS ¹⁻²	VS ¹⁻²	SI ¹⁻²	I ¹⁻³
Flawless	Internally Flawless	Very Very Slightly Included	Very Slightly Included	Slightly Included	Included



ADDITIONAL GRADING INFORMATION

Polish **EXCELLENT**

Symmetry **EXCELLENT**

Fluorescence **NONE**

Inscription(s) **IGI LG754576764**

Comments: This Laboratory Grown Diamond was created by Chemical Vapor Deposition (CVD) growth process. Type IIa



January 24, 2026	IGI Report No LG754576764	2.14 CARATS	E	VVS 2	62.9%	57%	Slightly Thick (Faceted)	Pointed	EXCELLENT	EXCELLENT	NONE	IGI LG754576764
8.14 - 8.17 X 5.13 MM	ROUND BRILLIANT	Carat Weight	Color Grade	Clarity Grade	Depth	Table	Girdle	Culet	Polish	Symmetry	Fluorescence	Inscription(s)

Comments: This Laboratory Grown Diamond was created by Chemical Vapor Deposition (CVD) growth process. Type IIa