



ELECTRONIC COPY

LABORATORY GROWN DIAMOND REPORT

LG754572838
Report verification at igi.org

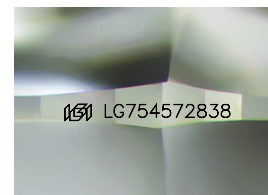
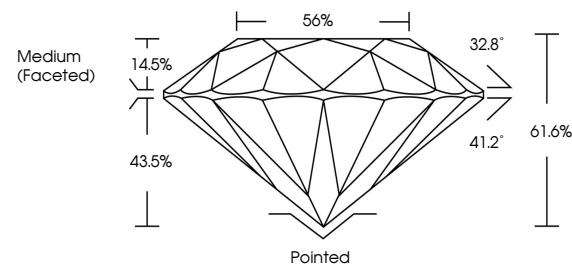
December 12, 2025	
IGI Report Number	LG754572838
Description	LABORATORY GROWN DIAMOND
Shape and Cutting Style	ROUND BRILLIANT
Measurements	6.46 - 6.51 X 3.99 MM
GRADING RESULTS	
Carat Weight	1.02 CARAT
Color Grade	D
Clarity Grade	VS 1
Cut Grade	IDEAL

ADDITIONAL GRADING INFORMATION

Polish	EXCELLENT
Symmetry	EXCELLENT
Fluorescence	NONE
Inscription(s)	151 LG754572838

Comments: As Grown - No indication of post-growth treatment.
This Laboratory Grown Diamond was created by High Pressure High Temperature (HPHT) growth process.
Type II

PROPORTIONS



Sample Image Used

COLOR

D E F G H I J Faint Very Light Light

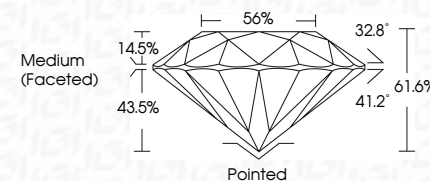
CLARITY

FL	IF	VVS ¹⁻²	VS ¹⁻²	SI ¹⁻²	I ¹⁻³
Flawless	Internally Flawless	Very Very Slightly Included	Very Slightly Included	Slightly Included	Included

LABORATORY GROWN DIAMOND REPORT



December 12, 2025	
IGI Report Number	LG754572838
Description	LABORATORY GROWN DIAMOND
Shape and Cutting Style	ROUND BRILLIANT
Measurements	6.46 - 6.51 X 3.99 MM
GRADING RESULTS	
Carat Weight	1.02 CARAT
Color Grade	D
Clarity Grade	VS 1
Cut Grade	IDEAL



ADDITIONAL GRADING INFORMATION

Polish	EXCELLENT
Symmetry	EXCELLENT
Fluorescence	NONE
Inscription(s)	(G) LG754572838
Comments: As Grown - No indication of post-growth treatment.	
This Laboratory Grown Diamond was created by High Pressure High Temperature (HPHT) growth process.	
Type II	



© IGI 2020, International Gemological Institute

FD - 10 20

www.igi.org



THIS DOCUMENT WAS PRODUCED WITH THE FOLLOWING SECURITY MEASURES: SPECIAL DOCUMENT PAPER, INK SCREENS, WATERMARK, BACKGROUND DESIGNS, HOLOGRAM AND OTHER SECURITY FEATURES NOT LISTED AND DO EXCEED DOCUMENT SECURITY INDUSTRY GUIDELINE

December 12, 2025
IGI Report No LG754572838
ROUND BRILLIANT

6.46 - 6.51 X 3.99 MM

6.46 - 6.51 X 3.99 MM
Carat Weight
1.02 CARAT

Catali Weight	I.UZ CATAL
Color Grade	D

Clarity Grade	VS 1
VS 1	
VS 2	
VS 3	
VS 4	
VS 5	
VS 6	
VS 7	
VS 8	
VS 9	
VS 10	
VS 11	
VS 12	
VS 13	
VS 14	
VS 15	
VS 16	
VS 17	
VS 18	
VS 19	
VS 20	
VS 21	
VS 22	
VS 23	
VS 24	
VS 25	
VS 26	
VS 27	
VS 28	
VS 29	
VS 30	
VS 31	
VS 32	
VS 33	
VS 34	
VS 35	
VS 36	
VS 37	
VS 38	
VS 39	
VS 40	
VS 41	
VS 42	
VS 43	
VS 44	
VS 45	
VS 46	
VS 47	
VS 48	
VS 49	
VS 50	
VS 51	
VS 52	
VS 53	
VS 54	
VS 55	
VS 56	
VS 57	
VS 58	
VS 59	
VS 60	
VS 61	
VS 62	
VS 63	
VS 64	
VS 65	
VS 66	
VS 67	
VS 68	
VS 69	
VS 70	
VS 71	
VS 72	
VS 73	
VS 74	
VS 75	
VS 76	
VS 77	
VS 78	
VS 79	
VS 80	
VS 81	
VS 82	
VS 83	
VS 84	
VS 85	
VS 86	
VS 87	
VS 88	
VS 89	
VS 90	
VS 91	
VS 92	
VS 93	
VS 94	
VS 95	
VS 96	
VS 97	
VS 98	
VS 99	
VS 100	

Clarity Grade	VS 1	IDEAL
Out Grade		

	Depth	61.6%
0-100m	0.0%	0.0%
100-200m	0.0%	0.0%
200-300m	0.0%	0.0%
300-400m	0.0%	0.0%
400-500m	0.0%	0.0%
500-600m	0.0%	0.0%
600-700m	0.0%	0.0%
700-800m	0.0%	0.0%
800-900m	0.0%	0.0%
900-1000m	0.0%	0.0%
1000-1100m	0.0%	0.0%
1100-1200m	0.0%	0.0%
1200-1300m	0.0%	0.0%
1300-1400m	0.0%	0.0%
1400-1500m	0.0%	0.0%
1500-1600m	0.0%	0.0%
1600-1700m	0.0%	0.0%
1700-1800m	0.0%	0.0%
1800-1900m	0.0%	0.0%
1900-2000m	0.0%	0.0%
2000-2100m	0.0%	0.0%
2100-2200m	0.0%	0.0%
2200-2300m	0.0%	0.0%
2300-2400m	0.0%	0.0%
2400-2500m	0.0%	0.0%
2500-2600m	0.0%	0.0%
2600-2700m	0.0%	0.0%
2700-2800m	0.0%	0.0%
2800-2900m	0.0%	0.0%
2900-3000m	0.0%	0.0%
3000-3100m	0.0%	0.0%
3100-3200m	0.0%	0.0%
3200-3300m	0.0%	0.0%
3300-3400m	0.0%	0.0%
3400-3500m	0.0%	0.0%
3500-3600m	0.0%	0.0%
3600-3700m	0.0%	0.0%
3700-3800m	0.0%	0.0%
3800-3900m	0.0%	0.0%
3900-4000m	0.0%	0.0%
4000-4100m	0.0%	0.0%
4100-4200m	0.0%	0.0%
4200-4300m	0.0%	0.0%
4300-4400m	0.0%	0.0%
4400-4500m	0.0%	0.0%
4500-4600m	0.0%	0.0%
4600-4700m	0.0%	0.0%
4700-4800m	0.0%	0.0%
4800-4900m	0.0%	0.0%
4900-5000m	0.0%	0.0%
5000-5100m	0.0%	0.0%
5100-5200m	0.0%	0.0%
5200-5300m	0.0%	0.0%
5300-5400m	0.0%	0.0%
5400-5500m	0.0%	0.0%
5500-5600m	0.0%	0.0%
5600-5700m	0.0%	0.0%
5700-5800m	0.0%	0.0%
5800-5900m	0.0%	0.0%
5900-6000m	0.0%	0.0%
6000-6100m	0.0%	0.0%
6100-6200m	0.0%	0.0%
6200-6300m	0.0%	0.0%
6300-6400m	0.0%	0.0%
6400-6500m	0.0%	0.0%
6500-6600m	0.0%	0.0%
6600-6700m	0.0%	0.0%
6700-6800m	0.0%	0.0%
6800-6900m	0.0%	0.0%
6900-7000m	0.0%	0.0%
7000-7100m	0.0%	0.0%
7100-7200m	0.0%	0.0%
7200-7300m	0.0%	0.0%
7300-7400m	0.0%	0.0%
7400-7500m	0.0%	0.0%
7500-7600m	0.0%	0.0%
7600-7700m	0.0%	0.0%
7700-7800m	0.0%	0.0%
7800-7900m	0.0%	0.0%
7900-8000m	0.0%	0.0%
8000-8100m	0.0%	0.0%
8100-8200m	0.0%	0.0%
8200-8300m	0.0%	0.0%
8300-8400m	0.0%	0.0%
8400-8500m	0.0%	0.0%
8500-8600m	0.0%	0.0%
8600-8700m	0.0%	0.0%
8700-8800m	0.0%	0.0%
8800-8900m	0.0%	0.0%
8900-9000m	0.0%	0.0%
9000-9100m	0.0%	0.0%
9100-9200m	0.0%	0.0%
9200-9300m	0.0%	0.0%
9300-9400m	0.0%	0.0%
9400-9500m	0.0%	0.0%
9500-9600m	0.0%	0.0%
9600-9700m	0.0%	0.0%
9700-9800m	0.0%	0.0%
9800-9900m	0.0%	0.0%
9900-10000m	0.0%	0.0%

Table	56%
Girdle	

Girdle

	Culet	Pointed
1	0.00	0.00
2	0.00	0.00
3	0.00	0.00
4	0.00	0.00
5	0.00	0.00
6	0.00	0.00
7	0.00	0.00
8	0.00	0.00
9	0.00	0.00
10	0.00	0.00
11	0.00	0.00
12	0.00	0.00
13	0.00	0.00
14	0.00	0.00
15	0.00	0.00
16	0.00	0.00
17	0.00	0.00
18	0.00	0.00
19	0.00	0.00
20	0.00	0.00
21	0.00	0.00
22	0.00	0.00
23	0.00	0.00
24	0.00	0.00
25	0.00	0.00
26	0.00	0.00
27	0.00	0.00
28	0.00	0.00
29	0.00	0.00
30	0.00	0.00
31	0.00	0.00
32	0.00	0.00
33	0.00	0.00
34	0.00	0.00
35	0.00	0.00
36	0.00	0.00
37	0.00	0.00
38	0.00	0.00
39	0.00	0.00
40	0.00	0.00
41	0.00	0.00
42	0.00	0.00
43	0.00	0.00
44	0.00	0.00
45	0.00	0.00
46	0.00	0.00
47	0.00	0.00
48	0.00	0.00
49	0.00	0.00
50	0.00	0.00
51	0.00	0.00
52	0.00	0.00
53	0.00	0.00
54	0.00	0.00
55	0.00	0.00
56	0.00	0.00
57	0.00	0.00
58	0.00	0.00
59	0.00	0.00
60	0.00	0.00
61	0.00	0.00
62	0.00	0.00
63	0.00	0.00
64	0.00	0.00
65	0.00	0.00
66	0.00	0.00
67	0.00	0.00
68	0.00	0.00
69	0.00	0.00
70	0.00	0.00
71	0.00	0.00
72	0.00	0.00
73	0.00	0.00
74	0.00	0.00
75	0.00	0.00
76	0.00	0.00
77	0.00	0.00
78	0.00	0.00
79	0.00	0.00
80	0.00	0.00
81	0.00	0.00
82	0.00	0.00
83	0.00	0.00
84	0.00	0.00
85	0.00	0.00
86	0.00	0.00
87	0.00	0.00
88	0.00	0.00
89	0.00	0.00
90	0.00	0.00
91	0.00	0.00
92	0.00	0.00
93	0.00	0.00
94	0.00	0.00
95	0.00	0.00
96	0.00	0.00
97	0.00	0.00
98	0.00	0.00
99	0.00	0.00
100	0.00	0.00

Polished	Excellent
Polish	

Symmetry

Fluorescence	None
Inscription(s)	1601 G754572838

Inscription(s)

Comments:
As Grown - No Indication of post-arrowth

As Grown - No Indication of post-growth treatment.

This Laboratory Grown Diamond was created by High Pressure High

Temperature (HPD) growth process.
Type II