



LABORATORY GROWN DIAMOND REPORT

December 18, 2025
 IGI Report Number **LG754572336**
 Description **LABORATORY GROWN DIAMOND**
 Shape and Cutting Style **PEAR BRILLIANT**
 Measurements **6.61 X 4.05 X 2.48 MM**

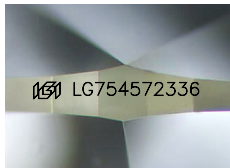
GRADING RESULTS

Carat Weight **0.39 CARAT**
 Color Grade **E**
 Clarity Grade **VS 1**

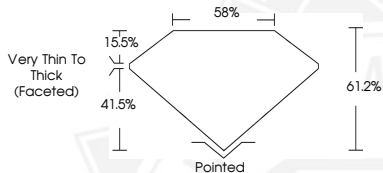
ADDITIONAL GRADING INFORMATION

Polish **GOOD**
 Symmetry **GOOD**
 Fluorescence **NONE**
 Inscription(s) **IGI LG754572336**

Comments: This Laboratory Grown Diamond was created by Chemical Vapor Deposition (CVD) growth process. Type IIa



Sample Image Used



December 18, 2025
 IGI Report Number **LG754572336**
PEAR BRILLIANT
LABORATORY GROWN DIAMOND
6.61 X 4.05 X 2.48 MM
 Carat Weight **0.39 CARAT**
 Color Grade **E**
 Clarity Grade **VS 1**
 Polish **GOOD**
 Symmetry **GOOD**
 Fluorescence **NONE**
 Inscription(s) **IGI LG754572336**

Comments: This Laboratory Grown Diamond was created by Chemical Vapor Deposition (CVD) growth process. Type IIa



December 18, 2025
 IGI Report Number **LG754572336**
PEAR BRILLIANT
LABORATORY GROWN DIAMOND
6.61 X 4.05 X 2.48 MM
 Carat Weight **0.39 CARAT**
 Color Grade **E**
 Clarity Grade **VS 1**
 Polish **GOOD**
 Symmetry **GOOD**
 Fluorescence **NONE**
 Inscription(s) **IGI LG754572336**

Comments: This Laboratory Grown Diamond was created by Chemical Vapor Deposition (CVD) growth process. Type IIa



THIS DOCUMENT WAS PRODUCED WITH THE FOLLOWING SECURITY MEASURES: SPECIAL DOCUMENT PAPER, INK SCREENS, WATERMARK, BACKGROUND DESIGNS, HOLOGRAM AND OTHER SECURITY FEATURES NOT LISTED AND DO EXCEED DOCUMENT SECURITY INDUSTRY GUIDELINES.