



**INTERNATIONAL
GEMOLOGICAL
INSTITUTE**

LABORATORY GROWN DIAMOND REPORT

December 16, 2025
 IGI Report Number **LG754572185**
 Description **LABORATORY GROWN DIAMOND**
 Shape and Cutting Style **ROUND BRILLIANT**
 Measurements **5.35 - 5.39 X 3.23 MM**

GRADING RESULTS

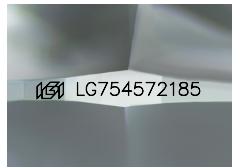
Carat Weight **0.56 CARAT**
 Color Grade **D**
 Clarity Grade **VS 1**
 Cut Grade **IDEAL**

ADDITIONAL GRADING INFORMATION

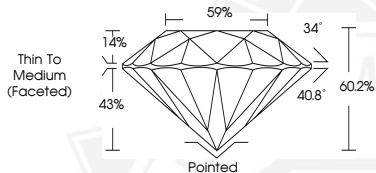
Polish **EXCELLENT**
 Symmetry **EXCELLENT**
 Fluorescence **NONE**
 Inscription(s) **IGI LG754572185**

Comments: HEARTS & ARROWS
 This Laboratory Grown Diamond was created by Chemical Vapor
 Deposition (CVD) growth process.
 Type IIa

ELECTRONIC COPY



Sample Image Used



HEARTS & ARROWS



December 16, 2025
 IGI Report Number **LG754572185**
ROUND BRILLIANT
LABORATORY GROWN DIAMOND
5.35 - 5.39 X 3.23 MM
 Carat Weight **0.56 CARAT**
 Color Grade **D**
 Clarity Grade **VS 1**
 Cut Grade **IDEAL**
 Polish **EXCELLENT**
 Symmetry **EXCELLENT**
 Fluorescence **NONE**
 Inscription(s) **IGI LG754572185**

Comments: HEARTS & ARROWS This
 Laboratory Grown Diamond was
 created by Chemical Vapor
 Deposition (CVD) growth process.
 Type IIa



December 16, 2025
 IGI Report Number **LG754572185**
ROUND BRILLIANT
LABORATORY GROWN DIAMOND
5.35 - 5.39 X 3.23 MM
 Carat Weight **0.56 CARAT**
 Color Grade **D**
 Clarity Grade **VS 1**
 Cut Grade **IDEAL**
 Polish **EXCELLENT**
 Symmetry **EXCELLENT**
 Fluorescence **NONE**
 Inscription(s) **IGI LG754572185**

Comments: HEARTS & ARROWS This
 Laboratory Grown Diamond was
 created by Chemical Vapor
 Deposition (CVD) growth process.
 Type IIa

THIS DOCUMENT WAS PRODUCED WITH THE FOLLOWING SECURITY MEASURES: SPECIAL DOCUMENT PAPER, INK SCREENS, WATERMARK, BACKGROUND DESIGNS, HOLOGRAM AND OTHER SECURITY FEATURES NOT LISTED AND DO EXCEED DOCUMENT SECURITY INDUSTRY GUIDELINES.

For terms & conditions and to verify this report, please visit www.igi.org