



December 16, 2025

IGI Report Number **LG754572183**

ROUND BRILLIANT

LABORATORY GROWN DIAMOND

5.66 - 5.68 X 3.47 MM

| | |
|----------------|------------------------|
| Carat Weight | 0.68 CARAT |
| Color Grade | F |
| Clarity Grade | VVS 2 |
| Cut Grade | IDEAL |
| Polish | EXCELLENT |
| Symmetry | EXCELLENT |
| Fluorescence | NONE |
| Inscription(s) | IGI LG754572183 |

Comments: HEARTS & ARROWS This Laboratory Grown Diamond was created by Chemical Vapor Deposition (CVD) growth process. Type Ila

LABORATORY GROWN DIAMOND REPORT

December 16, 2025

IGI Report Number **LG754572183**

Description **LABORATORY GROWN DIAMOND**

Shape and Cutting Style **ROUND BRILLIANT**

Measurements **5.66 - 5.68 X 3.47 MM**

GRADING RESULTS

Carat Weight **0.68 CARAT**

Color Grade **F**

Clarity Grade **VVS 2**

Cut Grade **IDEAL**

ADDITIONAL GRADING INFORMATION

Polish **EXCELLENT**

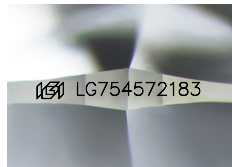
Symmetry **EXCELLENT**

Fluorescence **NONE**

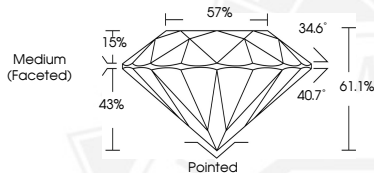
Inscription(s) **IGI LG754572183**

Comments: HEARTS & ARROWS

This Laboratory Grown Diamond was created by Chemical Vapor Deposition (CVD) growth process. Type Ila



Sample Image Used



December 16, 2025

IGI Report Number **LG754572183**

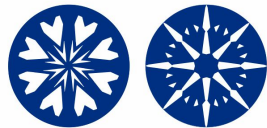
ROUND BRILLIANT

LABORATORY GROWN DIAMOND

5.66 - 5.68 X 3.47 MM

| | |
|----------------|------------------------|
| Carat Weight | 0.68 CARAT |
| Color Grade | F |
| Clarity Grade | VVS 2 |
| Cut Grade | IDEAL |
| Polish | EXCELLENT |
| Symmetry | EXCELLENT |
| Fluorescence | NONE |
| Inscription(s) | IGI LG754572183 |

Comments: HEARTS & ARROWS This Laboratory Grown Diamond was created by Chemical Vapor Deposition (CVD) growth process. Type Ila



HEARTS & ARROWS



THIS DOCUMENT WAS PRODUCED WITH THE FOLLOWING SECURITY MEASURES: SPECIAL DOCUMENT PAPER, INK SCREENS, WATERMARK, BACKGROUND DESIGNS, HOLOGRAM AND OTHER SECURITY FEATURES NOT LISTED AND DO EXCEED DOCUMENT SECURITY INDUSTRY GUIDELINES.

For terms & conditions and to verify this report, please visit www.igi.org