



**INTERNATIONAL  
GEMOLOGICAL  
INSTITUTE**

**LABORATORY GROWN DIAMOND REPORT**

December 15, 2025  
 IGI Report Number **LG754572009**  
 Description **LABORATORY GROWN DIAMOND**  
 Shape and Cutting Style **ROUND BRILLIANT**  
 Measurements **5.47 - 5.49 X 3.38 MM**

**GRADING RESULTS**

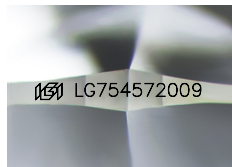
Carat Weight **0.62 CARAT**  
 Color Grade **D**  
 Clarity Grade **VS 1**  
 Cut Grade **IDEAL**

**ADDITIONAL GRADING INFORMATION**

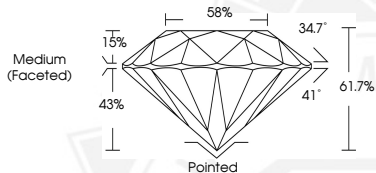
Polish **EXCELLENT**  
 Symmetry **EXCELLENT**  
 Fluorescence **NONE**  
 Inscription(s) **IGI LG754572009**

Comments: HEARTS & ARROWS  
 This Laboratory Grown Diamond was created by Chemical Vapor  
 Deposition (CVD) growth process.  
 Type Ila

**ELECTRONIC COPY**



Sample Image Used



**HEARTS & ARROWS**



December 15, 2025  
 IGI Report Number **LG754572009**  
 ROUND BRILLIANT  
 LABORATORY GROWN DIAMOND  
 5.47 - 5.49 X 3.38 MM  
 Carat Weight **0.62 CARAT**  
 Color Grade **D**  
 Clarity Grade **VS 1**  
 Cut Grade **IDEAL**  
 Polish **EXCELLENT**  
 Symmetry **EXCELLENT**  
 Fluorescence **NONE**  
 Inscription(s) **IGI LG754572009**

Comments: HEARTS & ARROWS This  
 Laboratory Grown Diamond was  
 created by Chemical Vapor  
 Deposition (CVD) growth process.  
 Type Ila



December 15, 2025  
 IGI Report Number **LG754572009**  
 ROUND BRILLIANT  
 LABORATORY GROWN DIAMOND  
 5.47 - 5.49 X 3.38 MM  
 Carat Weight **0.62 CARAT**  
 Color Grade **D**  
 Clarity Grade **VS 1**  
 Cut Grade **IDEAL**  
 Polish **EXCELLENT**  
 Symmetry **EXCELLENT**  
 Fluorescence **NONE**  
 Inscription(s) **IGI LG754572009**

Comments: HEARTS & ARROWS This  
 Laboratory Grown Diamond was  
 created by Chemical Vapor  
 Deposition (CVD) growth process.  
 Type Ila



THIS DOCUMENT WAS PRODUCED WITH THE FOLLOWING SECURITY MEASURES: SPECIAL DOCUMENT PAPER, INK SCREENS, WATERMARK, BACKGROUND DESIGNS, HOLOGRAM AND OTHER SECURITY FEATURES NOT LISTED AND DO EXCEED DOCUMENT SECURITY INDUSTRY GUIDELINES.

For terms & conditions and to verify this report, please visit [www.igi.org](http://www.igi.org)