



December 12, 2025

IGI Report Number **LG754571979**

**ROUND BRILLIANT
LABORATORY GROWN DIAMOND
6.06 - 6.09 X 3.71 MM**

**0.84 CARAT
E
VS 1
IDEAL
EXCELLENT
EXCELLENT
NONE
IGI LG754571979**

Comments: HEARTS & ARROWS This Laboratory Grown Diamond was created by Chemical Vapor Deposition (CVD) growth process. Type Ila

LABORATORY GROWN DIAMOND REPORT

December 12, 2025
IGI Report Number **LG754571979**
Description **LABORATORY GROWN DIAMOND**
Shape and Cutting Style **ROUND BRILLIANT**
Measurements **6.06 - 6.09 X 3.71 MM**

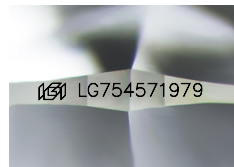
GRADING RESULTS

Carat Weight **0.84 CARAT**
Color Grade **E**
Clarity Grade **VS 1**
Cut Grade **IDEAL**

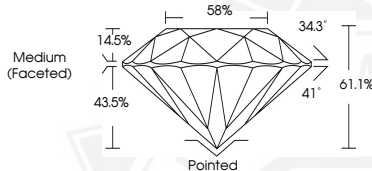
ADDITIONAL GRADING INFORMATION

Polish **EXCELLENT**
Symmetry **EXCELLENT**
Fluorescence **NONE**
Inscription(s) **IGI LG754571979**

Comments: HEARTS & ARROWS
This Laboratory Grown Diamond was created by Chemical Vapor Deposition (CVD) growth process. Type Ila



Sample Image Used



HEARTS & ARROWS



December 12, 2025

IGI Report Number **LG754571979**

**ROUND BRILLIANT
LABORATORY GROWN DIAMOND
6.06 - 6.09 X 3.71 MM**

**0.84 CARAT
E
VS 1
IDEAL
EXCELLENT
EXCELLENT
NONE
IGI LG754571979**

Comments: HEARTS & ARROWS This Laboratory Grown Diamond was created by Chemical Vapor Deposition (CVD) growth process. Type Ila

THIS DOCUMENT WAS PRODUCED WITH THE FOLLOWING SECURITY MEASURES: SPECIAL DOCUMENT PAPER, INK SCREENS, WATERMARK, BACKGROUND DESIGNS, HOLOGRAM AND OTHER SECURITY FEATURES NOT LISTED AND DO EXCEED DOCUMENT SECURITY INDUSTRY GUIDELINES.

For terms & conditions and to verify this report, please visit www.igi.org