



December 11, 2025  
**IGI Report Number LG754571919**  
**CUT CORNERED RECTANGULAR  
 MODIFIED BRILLIANT**  
**LABORATORY GROWN DIAMOND**  
**6.64 X 4.57 X 3.07 MM**  
 Carat Weight **0.80 CARAT**  
 Color Grade **D**  
 Clarity Grade **VVS 2**  
 Polish **EXCELLENT**  
 Symmetry **EXCELLENT**  
 Fluorescence **NONE**  
 Inscription(s) **IGI LG754571919**

**LABORATORY GROWN DIAMOND REPORT**

December 11, 2025  
 IGI Report Number **LG754571919**  
 Description **LABORATORY GROWN DIAMOND**  
 Shape and Cutting Style **CUT CORNERED RECTANGULAR MODIFIED  
 BRILLIANT**  
 Measurements **6.64 X 4.57 X 3.07 MM**

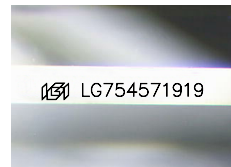
**GRADING RESULTS**

Carat Weight **0.80 CARAT**  
 Color Grade **D**  
 Clarity Grade **VVS 2**

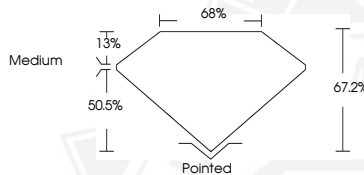
**ADDITIONAL GRADING INFORMATION**

Polish **EXCELLENT**  
 Symmetry **EXCELLENT**  
 Fluorescence **NONE**  
 Inscription(s) **IGI LG754571919**

Comments: As Grown - No indication of post-growth treatment.  
 This Laboratory Grown Diamond was created by High Pressure High  
 Temperature (HPHT) growth process.  
 Type II



Sample Image Used



December 11, 2025  
**IGI Report Number LG754571919**  
**CUT CORNERED RECTANGULAR  
 MODIFIED BRILLIANT**  
**LABORATORY GROWN DIAMOND**  
**6.64 X 4.57 X 3.07 MM**  
 Carat Weight **0.80 CARAT**  
 Color Grade **D**  
 Clarity Grade **VVS 2**  
 Polish **EXCELLENT**  
 Symmetry **EXCELLENT**  
 Fluorescence **NONE**  
 Inscription(s) **IGI LG754571919**

Comments: As Grown - No indication of post-growth treatment.  
 This Laboratory Grown Diamond was created by High Pressure High Temperature (HPHT) growth process.  
 Type II

THIS DOCUMENT WAS PRODUCED WITH THE FOLLOWING SECURITY MEASURES: SPECIAL DOCUMENT PAPER, INK SCREENS, WATERMARK, BACKGROUND DESIGNS, HOLOGRAM AND OTHER SECURITY FEATURES NOT LISTED AND DO EXCEED DOCUMENT SECURITY INDUSTRY GUIDELINES.