



LABORATORY GROWN DIAMOND REPORT

December 5, 2025
 IGI Report Number **LG754571534**
 Description **LABORATORY GROWN DIAMOND**
 Shape and Cutting Style **PEAR BRILLIANT**
 Measurements **7.46 X 4.73 X 2.83 MM**

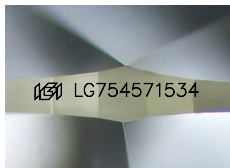
GRADING RESULTS

Carat Weight **0.58 CARAT**
 Color Grade **D**
 Clarity Grade **INTERNALLY FLAWLESS**

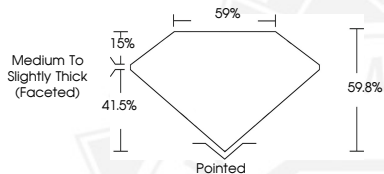
ADDITIONAL GRADING INFORMATION

Polish **EXCELLENT**
 Symmetry **EXCELLENT**
 Fluorescence **NONE**
 Inscription(s) **IGI LG754571534**

Comments: This Laboratory Grown Diamond was created by
 Chemical Vapor Deposition (CVD) growth process.
 Type IIa



Sample Image Used



December 5, 2025
 IGI Report Number **LG754571534**
PEAR BRILLIANT
LABORATORY GROWN DIAMOND
7.46 X 4.73 X 2.83 MM
 Carat Weight **0.58 CARAT**
 Color Grade **D**
 Clarity Grade **I.F.**
 Polish **EXCELLENT**
 Symmetry **EXCELLENT**
 Fluorescence **NONE**
 Inscription(s) **IGI LG754571534**

Comments: This Laboratory Grown
 Diamond was created by
 Chemical Vapor Deposition (CVD)
 growth process. Type IIa



December 5, 2025
 IGI Report Number **LG754571534**
PEAR BRILLIANT
LABORATORY GROWN DIAMOND
7.46 X 4.73 X 2.83 MM
 Carat Weight **0.58 CARAT**
 Color Grade **D**
 Clarity Grade **I.F.**
 Polish **EXCELLENT**
 Symmetry **EXCELLENT**
 Fluorescence **NONE**
 Inscription(s) **IGI LG754571534**

Comments: This Laboratory Grown
 Diamond was created by
 Chemical Vapor Deposition (CVD)
 growth process. Type IIa



THIS DOCUMENT WAS PRODUCED WITH THE FOLLOWING SECURITY MEASURES: SPECIAL DOCUMENT PAPER, INK SCREENS, WATERMARK, BACKGROUND DESIGNS, HOLOGRAM AND OTHER SECURITY FEATURES NOT LISTED AND DO EXCEED DOCUMENT SECURITY INDUSTRY GUIDELINES.