



INTERNATIONAL GEMOLOGICAL INSTITUTE

ELECTRONIC COPY

LABORATORY GROWN DIAMOND REPORT

December 6, 2025

IGI Report Number

LG754569669

Description

LABORATORY GROWN DIAMOND

Shape and Cutting Style

CUSHION ROSE CUT

Measurements

6.70 X 6.55 X 1.39 MM

GRADING RESULTS

Carat Weight

0.71 CARAT

Color Grade

FANCY LIGHT YELLOW

Clarity Grade

VS 2

ADDITIONAL GRADING INFORMATION

Polish

VERY GOOD

Symmetry

EXCELLENT

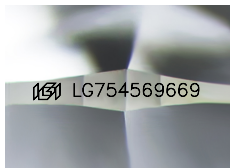
Fluorescence

NONE

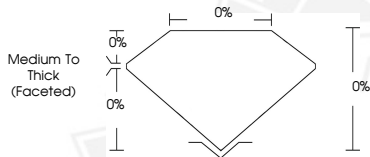
Inscription(s)

IGI LG754569669

Comments: This Laboratory Grown Diamond was created by Chemical Vapor Deposition (CVD) growth process.



Sample Image Used



December 6, 2025

IGI Report Number LG754569669

CUSHION ROSE CUT

LABORATORY GROWN DIAMOND

6.70 X 6.55 X 1.39 MM

Carat Weight 0.71 CARAT

Color Grade FANCY LIGHT
YELLOW

Clarity Grade VS 2

Polish VERY GOOD

Symmetry EXCELLENT

Fluorescence NONE

Inscription(s) IGI LG754569669

Comments: This Laboratory Grown Diamond was created by Chemical Vapor Deposition (CVD) growth process.



December 6, 2025

IGI Report Number LG754569669

CUSHION ROSE CUT

LABORATORY GROWN DIAMOND

6.70 X 6.55 X 1.39 MM

Carat Weight 0.71 CARAT

Color Grade FANCY LIGHT
YELLOW

Clarity Grade VS 2

Polish VERY GOOD

Symmetry EXCELLENT

Fluorescence NONE

Inscription(s) IGI LG754569669

Comments: This Laboratory Grown Diamond was created by Chemical Vapor Deposition (CVD) growth process.



THIS DOCUMENT WAS PRODUCED WITH THE FOLLOWING SECURITY MEASURES: SPECIAL DOCUMENT PAPER, INK SCREENS, WATERMARK, BACKGROUND DESIGNS, HOLOGRAM AND OTHER SECURITY FEATURES NOT LISTED AND DO EXCEED DOCUMENT SECURITY INDUSTRY GUIDELINES.

For terms & conditions and to verify this report, please visit www.igi.org