



INTERNATIONAL GEMOLOGICAL INSTITUTE

LABORATORY GROWN DIAMOND REPORT

December 10, 2025
IGI Report Number **LG754569668**
Description **LABORATORY GROWN DIAMOND**
Shape and Cutting Style **HEART ROSE CUT**
Measurements **6.57 X 8.69 X 1.94 MM**

GRADING RESULTS

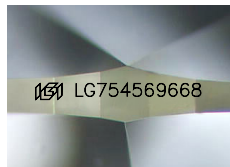
Carat Weight **0.87 CARAT**
Color Grade **FANCY YELLOW**
Clarity Grade **VS 2**

ADDITIONAL GRADING INFORMATION

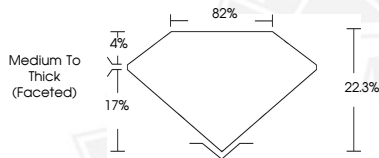
Polish **GOOD**
Symmetry **VERY GOOD**
Fluorescence **NONE**
Inscription(s) **IGI LG754569668**

Comments: This Laboratory Grown Diamond was created by
Chemical Vapor Deposition (CVD) growth process.

ELECTRONIC COPY



Sample Image Used



December 10, 2025
IGI Report Number **LG754569668**
HEART ROSE CUT
LABORATORY GROWN DIAMOND
6.57 X 8.69 X 1.94 MM
Carat Weight **0.87 CARAT**
Color Grade **FANCY YELLOW**
Clarity Grade **VS 2**
Polish **GOOD**
Symmetry **VERY GOOD**
Fluorescence **NONE**
Inscription(s) **IGI LG754569668**
Comments: This Laboratory Grown
Diamond was created by
Chemical Vapor Deposition (CVD)
growth process.



December 10, 2025
IGI Report Number **LG754569668**
HEART ROSE CUT
LABORATORY GROWN DIAMOND
6.57 X 8.69 X 1.94 MM
Carat Weight **0.87 CARAT**
Color Grade **FANCY YELLOW**
Clarity Grade **VS 2**
Polish **GOOD**
Symmetry **VERY GOOD**
Fluorescence **NONE**
Inscription(s) **IGI LG754569668**
Comments: This Laboratory Grown
Diamond was created by
Chemical Vapor Deposition (CVD)
growth process.



THIS DOCUMENT WAS PRODUCED WITH THE FOLLOWING SECURITY MEASURES: SPECIAL DOCUMENT PAPER, INK SCREENS, WATERMARK, BACKGROUND DESIGNS, HOLOGRAM AND OTHER SECURITY FEATURES NOT LISTED AND DO EXCEED DOCUMENT SECURITY INDUSTRY GUIDELINES.

For terms & conditions and to verify this report, please visit www.igi.org