



**ELECTRONIC COPY**

LG754567403  
Report verification at igi.org



December 23, 2025  
IGI Report Number **LG754567403**  
Description **LABORATORY GROWN DIAMOND**  
Shape and Cutting Style **PRINCESS CUT**  
Measurements **6.26 X 6.20 X 4.42 MM**  
**GRADING RESULTS**  
Carat Weight **1.55 CARAT**  
Color Grade **FANCY INTENSE PINK**  
Clarity Grade **VVS 1**

December 23, 2025  
IGI Report Number **LG754567403**  
Description **LABORATORY GROWN DIAMOND**  
Shape and Cutting Style **PRINCESS CUT**  
Measurements **6.26 X 6.20 X 4.42 MM**

**GRADING RESULTS**

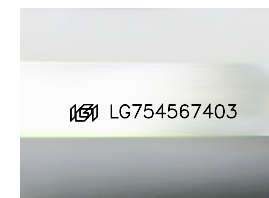
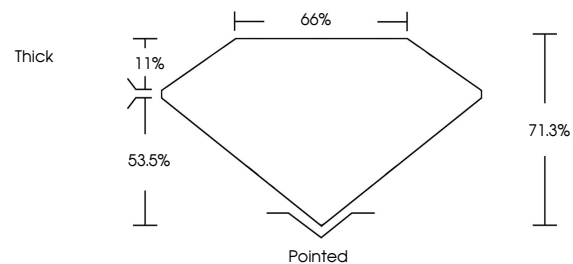
Carat Weight **1.55 CARAT**  
Color Grade **FANCY INTENSE PINK**  
Clarity Grade **VVS 1**

**ADDITIONAL GRADING INFORMATION**

Polish **VERY GOOD**  
Symmetry **EXCELLENT**  
Fluorescence **SLIGHT**  
Inscription(s) **LG754567403**

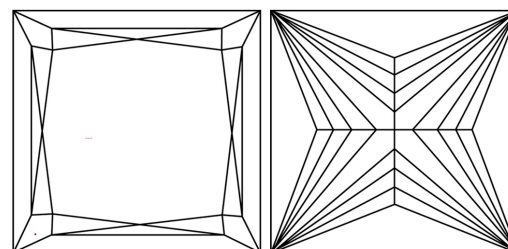
Comments: This Laboratory Grown Diamond was created by Chemical Vapor Deposition (CVD) growth process.  
Indications of post-growth treatment.

**PROPORTIONS**



Sample Image Used

**CLARITY CHARACTERISTICS**



**KEY TO SYMBOLS**

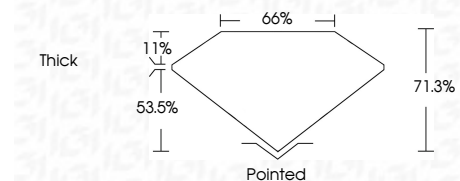
Red symbols indicate internal characteristics.  
Green symbols indicate external characteristics.

**COLOR**

D E F G H I J Faint Very Light Light

**CLARITY**

FL	IF	VVS <sup>1-2</sup>	VS <sup>1-2</sup>	SI <sup>1-2</sup>	I <sup>1-3</sup>
Flawless	Internally Flawless	Very Very Slightly Included	Very Slightly Included	Slightly Included	Included



**ADDITIONAL GRADING INFORMATION**

Polish **VERY GOOD**  
Symmetry **EXCELLENT**  
Fluorescence **SLIGHT**  
Inscription(s) **LG754567403**  
Comments: This Laboratory Grown Diamond was created by Chemical Vapor Deposition (CVD) growth process.  
Indications of post-growth treatment.



**IGI**

December 23, 2025  
IGI Report No **LG754567403**  
**PRINCESS CUT**  
**6.26 X 6.20 X 4.42 MM**  
Carat Weight **1.55 CARAT**  
Color Grade **FANCY INTENSE PINK**  
Clarity Grade **VVS 1**  
Depth **71.3%**  
Table **66%**  
Girdle **Thick**  
Culet **Pointed**  
Polish **VERY GOOD**  
Symmetry **EXCELLENT**  
Fluorescence **SLIGHT**  
Inscription(s) **LG754567403**  
Comments: This Laboratory Grown Diamond was created by Chemical Vapor Deposition (CVD) growth process.  
Indications of post-growth treatment.