



ELECTRONIC COPY

LG754566815
Report verification at igi.org



January 5, 2026

IGI Report Number **LG754566815**

Description **LABORATORY GROWN DIAMOND**

Shape and Cutting Style **ROUND BRILLIANT**

Measurements **8.45 - 8.50 X 5.36 MM**

GRADING RESULTS

Carat Weight **2.37 CARATS**

Color Grade **FANCY PINK**

Clarity Grade **VVS 2**

Cut Grade **EXCELLENT**

January 5, 2026
IGI Report Number **LG754566815**
Description **LABORATORY GROWN DIAMOND**
Shape and Cutting Style **ROUND BRILLIANT**
Measurements **8.45 - 8.50 X 5.36 MM**

GRADING RESULTS

Carat Weight **2.37 CARATS**

Color Grade **FANCY PINK**

Clarity Grade **VVS 2**

Cut Grade **EXCELLENT**

ADDITIONAL GRADING INFORMATION

Polish **EXCELLENT**

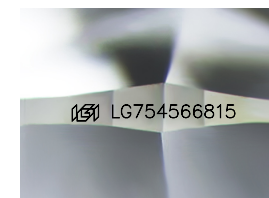
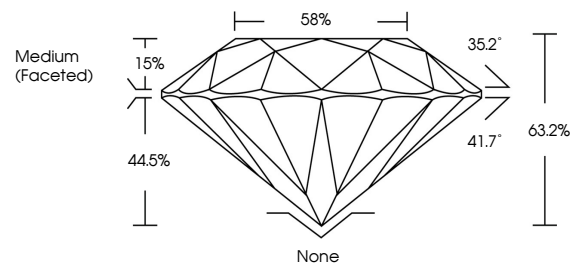
Symmetry **EXCELLENT**

Fluorescence **SLIGHT**

Inscription(s) **IGI LG754566815**

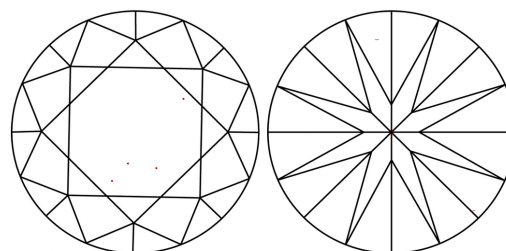
Comments: This Laboratory Grown Diamond was created by Chemical Vapor Deposition (CVD) growth process.
Indications of post-growth treatment.

PROPORTIONS



Sample Image Used

CLARITY CHARACTERISTICS



KEY TO SYMBOLS

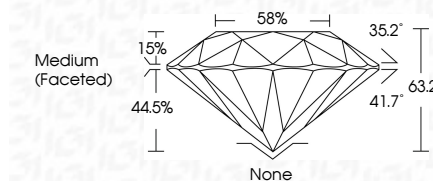
Red symbols indicate internal characteristics.
Green symbols indicate external characteristics.

COLOR

D E F G H I J Faint Very Light Light

CLARITY

FL	IF	VVS ¹⁻²	VS ¹⁻²	SI ¹⁻²	I ¹⁻³
Flawless	Internally Flawless	Very Very Slightly Included	Very Slightly Included	Slightly Included	Included



ADDITIONAL GRADING INFORMATION

Polish **EXCELLENT**

Symmetry **EXCELLENT**

Fluorescence **SLIGHT**

Inscription(s) **IGI LG754566815**

Comments: This Laboratory Grown Diamond was created by Chemical Vapor Deposition (CVD) growth process.
Indications of post-growth treatment.



January 5, 2026
IGI Report No LG754566815
ROUND BRILLIANT

8.45 - 8.50 X 5.36 MM

2.37 CARATS
FANCY PINK

VVS 2
EXCELLENT

63.2%
58%

Medium (Faceted)

None
EXCELLENT
EXCELLENT
SLIGHT

IGI LG754566815

Comments: This Laboratory Grown Diamond was created by Chemical Vapor Deposition (CVD) growth process.
Indications of post-growth treatment.