



ELECTRONIC COPY

LG754563275
Report verification at igi.org



January 27, 2026

IGI Report Number **LG754563275**

Description **LABORATORY GROWN DIAMOND**

Shape and Cutting Style **EMERALD CUT**

Measurements **11.86 X 8.64 X 5.95 MM**

GRADING RESULTS

Carat Weight **6.10 CARATS**

Color Grade **FANCY VIVID BLUE**

Clarity Grade **VS 2**

January 27, 2026

IGI Report Number **LG754563275**

Description **LABORATORY GROWN DIAMOND**

Shape and Cutting Style **EMERALD CUT**

Measurements **11.86 X 8.64 X 5.95 MM**

GRADING RESULTS

Carat Weight **6.10 CARATS**

Color Grade **FANCY VIVID BLUE**

Clarity Grade **VS 2**

ADDITIONAL GRADING INFORMATION

Polish **EXCELLENT**

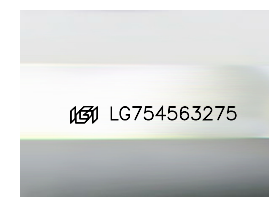
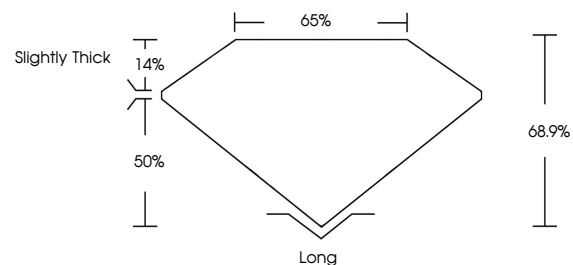
Symmetry **EXCELLENT**

Fluorescence **NONE**

Inscription(s) **LG754563275**

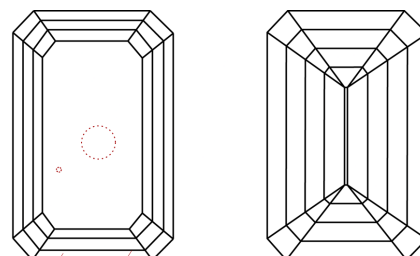
Comments: This Laboratory Grown Diamond was created by Chemical Vapor Deposition (CVD) growth process. Indications of post-growth treatment.

PROPORTIONS



Sample Image Used

CLARITY CHARACTERISTICS



KEY TO SYMBOLS

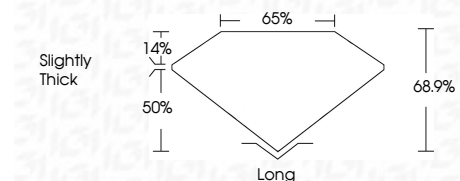
Red symbols indicate internal characteristics.
Green symbols indicate external characteristics.

COLOR

D E F G H I J Faint Very Light Light

CLARITY

FL	IF	VS ¹⁻²	VS ¹⁻²	SI ¹⁻²	I ¹⁻³
Flawless	Internally Flawless	Very Very Slightly Included	Very Slightly Included	Slightly Included	Included



ADDITIONAL GRADING INFORMATION

Polish **EXCELLENT**

Symmetry **EXCELLENT**

Fluorescence **NONE**

Inscription(s) **LG754563275**

Comments: This Laboratory Grown Diamond was created by Chemical Vapor Deposition (CVD) growth process. Indications of post-growth treatment.



January 27, 2026	6.10 CARATS	Long
IGI Report No LG754563275	FANCY VIVID BLUE	EXCELLENT
EMERALD CUT	VS 2	EXCELLENT
11.86 X 8.64 X 5.95 MM	68.9%	NONE
Carat Weight	50%	None
Color Grade	Slightly Thick	Inscription(s)
Clarity Grade		LG754563275
Depth		
Table		
Graile		
Culet		
Polish		
Symmetry		
Fluorescence		
Inscription(s)		

Comments: This Laboratory Grown Diamond was created by Chemical Vapor Deposition (CVD) growth process. Indications of post-growth treatment.