



ELECTRONIC COPY

LG754562319
Report verification at igi.org



January 12, 2026
IGI Report Number **LG754562319**
Description **LABORATORY GROWN DIAMOND**
Shape and Cutting Style **CUSHION MODIFIED BRILLIANT**
Measurements **8.98 X 5.57 X 3.54 MM**
GRADING RESULTS
Carat Weight **1.61 CARAT**
Color Grade **F**
Clarity Grade **VVS 2**

January 12, 2026
IGI Report Number **LG754562319**
Description **LABORATORY GROWN DIAMOND**
Shape and Cutting Style **CUSHION MODIFIED BRILLIANT**
Measurements **8.98 X 5.57 X 3.54 MM**

GRADING RESULTS

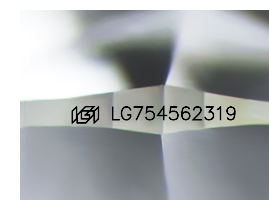
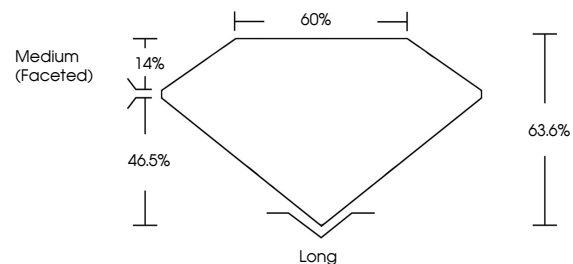
Carat Weight **1.61 CARAT**
Color Grade **F**
Clarity Grade **VVS 2**

ADDITIONAL GRADING INFORMATION

Polish **EXCELLENT**
Symmetry **EXCELLENT**
Fluorescence **NONE**
Inscription(s) **IGI LG754562319**

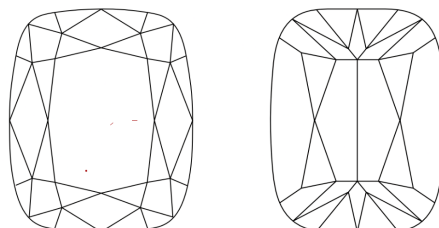
Comments: This Laboratory Grown Diamond was created by Chemical Vapor Deposition (CVD) growth process. Type IIa

PROPORTIONS



Sample Image Used

CLARITY CHARACTERISTICS



KEY TO SYMBOLS

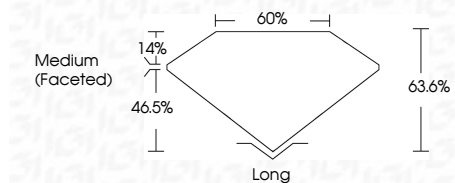
Red symbols indicate internal characteristics.
Green symbols indicate external characteristics.

COLOR

D E F G H I J Faint Very Light Light

CLARITY

FL	IF	VVS ¹⁻²	VS ¹⁻²	SI ¹⁻²	I ¹⁻³
Flawless	Internally Flawless	Very Very Slightly Included	Very Slightly Included	Slightly Included	Included



ADDITIONAL GRADING INFORMATION

Polish **EXCELLENT**
Symmetry **EXCELLENT**
Fluorescence **NONE**
Inscription(s) **IGI LG754562319**
Comments: This Laboratory Grown Diamond was created by Chemical Vapor Deposition (CVD) growth process. Type IIa



January 12, 2026
IGI Report No LG754562319
CUSHION MODIFIED BRILLIANT
8.98 X 5.57 X 3.54 MM
1.61 CARAT
F
VVS 2
63.6%
46.5%
Medium (Faceted)
Long
EXCELLENT
EXCELLENT
NONE
IGI LG754562319
Comments: This Laboratory Grown Diamond was created by Chemical Vapor Deposition (CVD) growth process. Type IIa