



ELECTRONIC COPY

LG754561948
Report verification at igi.org



January 6, 2026
IGI Report Number **LG754561948**
Description **LABORATORY GROWN DIAMOND**
Shape and Cutting Style **PEAR MIXED CUT**
Measurements **13.92 X 8.91 X 5.40 MM**
GRADING RESULTS
Carat Weight **5.04 CARATS**
Color Grade **FANCY YELLOW**
Clarity Grade **VS 2**

LABORATORY GROWN DIAMOND REPORT

January 6, 2026
IGI Report Number **LG754561948**
Description **LABORATORY GROWN DIAMOND**
Shape and Cutting Style **PEAR MIXED CUT**
Measurements **13.92 X 8.91 X 5.40 MM**

GRADING RESULTS

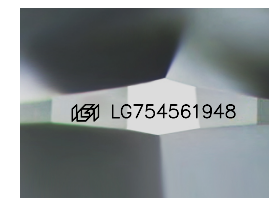
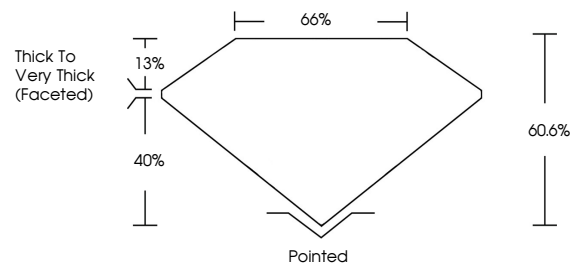
Carat Weight **5.04 CARATS**
Color Grade **FANCY YELLOW**
Clarity Grade **VS 2**

ADDITIONAL GRADING INFORMATION

Polish **VERY GOOD**
Symmetry **VERY GOOD**
Fluorescence **NONE**
Inscription(s) **IGI LG754561948**

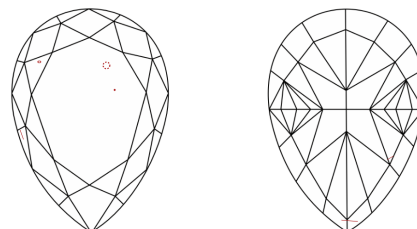
Comments: This Laboratory Grown Diamond was created by Chemical Vapor Deposition (CVD) growth process.

PROPORTIONS



Sample Image Used

CLARITY CHARACTERISTICS



KEY TO SYMBOLS

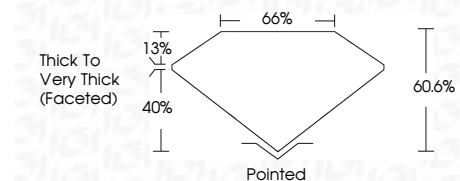
Red symbols indicate internal characteristics.
Green symbols indicate external characteristics.

COLOR

D E F G H I J Faint Very Light Light

CLARITY

FL	IF	VS ¹⁻²	VS ¹⁻²	SI ¹⁻²	I ¹⁻³
Flawless	Internally Flawless	Very Very Slightly Included	Very Slightly Included	Slightly Included	Included



ADDITIONAL GRADING INFORMATION

Polish **VERY GOOD**
Symmetry **VERY GOOD**
Fluorescence **NONE**
Inscription(s) **IGI LG754561948**
Comments: This Laboratory Grown Diamond was created by Chemical Vapor Deposition (CVD) growth process.



January 6, 2026
IGI Report No LG754561948
PEAR MIXED CUT
5.04 CARATS
FANCY YELLOW
VS 2
13.92 X 8.91 X 5.40 MM
60.6%
40%
13%
Pointed
Polished
VERY GOOD
VERY GOOD
NONE
IGI LG754561948
Comments: This Laboratory Grown Diamond was created by Chemical Vapor Deposition (CVD) growth process.