



**ELECTRONIC COPY**

LG754561823  
Report verification at igi.org



December 9, 2025

IGI Report Number **LG754561823**

Description **LABORATORY GROWN DIAMOND**

Shape and Cutting Style **EMERALD CUT**

Measurements **10.08 X 7.02 X 4.88 MM**

**GRADING RESULTS**

Carat Weight **3.52 CARATS**

Color Grade **D**

Clarity Grade **VS 1**

December 9, 2025  
IGI Report Number **LG754561823**  
Description **LABORATORY GROWN DIAMOND**  
Shape and Cutting Style **EMERALD CUT**  
Measurements **10.08 X 7.02 X 4.88 MM**

**GRADING RESULTS**

Carat Weight **3.52 CARATS**

Color Grade **D**

Clarity Grade **VS 1**

**ADDITIONAL GRADING INFORMATION**

Polish **EXCELLENT**

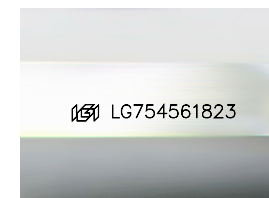
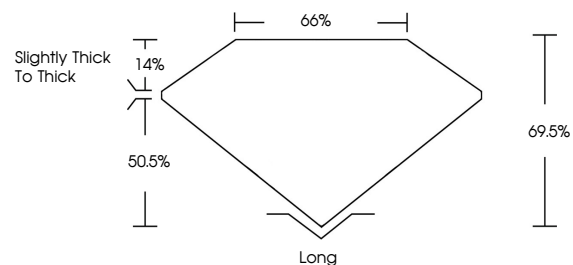
Symmetry **VERY GOOD**

Fluorescence **NONE**

Inscription(s) **IGI LG754561823**

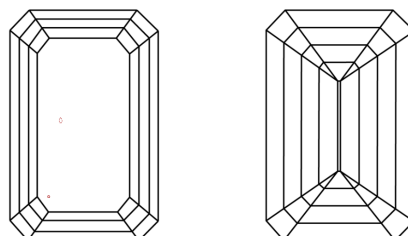
Comments: This Laboratory Grown Diamond was created by Chemical Vapor Deposition (CVD) growth process. Type IIa

**PROPORTIONS**



Sample Image Used

**CLARITY CHARACTERISTICS**



**KEY TO SYMBOLS**

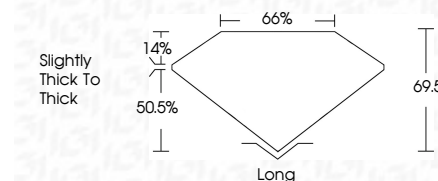
Red symbols indicate internal characteristics.  
Green symbols indicate external characteristics.

**COLOR**

D E F G H I J Faint Very Light Light

**CLARITY**

FL	IF	VS <sup>1-2</sup>	VS <sup>1-2</sup>	SI <sup>1-2</sup>	I <sup>1-3</sup>
Flawless	Internally Flawless	Very Very Slightly Included	Very Slightly Included	Slightly Included	Included



**ADDITIONAL GRADING INFORMATION**

Polish **EXCELLENT**

Symmetry **VERY GOOD**

Fluorescence **NONE**

Inscription(s) **IGI LG754561823**

Comments: This Laboratory Grown Diamond was created by Chemical Vapor Deposition (CVD) growth process. Type IIa



**IGI**



December 9, 2025  
IGI Report No LG754561823  
EMERALD CUT

10.08 X 7.02 X 4.88 MM

3.52 CARATS  
D

Color Grade  
D

Clarity Grade  
VS 1

Table  
66%

Depth  
60%

Girdle  
Slightly Thick To Thick

Culet  
Long

Polish  
EXCELLENT

Symmetry  
VERY GOOD

Fluorescence  
NONE

Inscription(s)  
IGI LG754561823

Comments: This Laboratory Grown Diamond was created by Chemical Vapor Deposition (CVD) growth process. Type IIa