



ELECTRONIC COPY

LG754560368
Report verification at igi.org



December 8, 2025
IGI Report Number **LG754560368**
Description **LABORATORY GROWN DIAMOND**
Shape and Cutting Style **CUSHION MODIFIED BRILLIANT**
Measurements **12.59 X 10.67 X 7.11 MM**
GRADING RESULTS
Carat Weight **9.02 CARATS**
Color Grade **FANCY VIVID YELLOW**
Clarity Grade **VS 2**

December 8, 2025
IGI Report Number **LG754560368**
Description **LABORATORY GROWN DIAMOND**
Shape and Cutting Style **CUSHION MODIFIED BRILLIANT**
Measurements **12.59 X 10.67 X 7.11 MM**

GRADING RESULTS

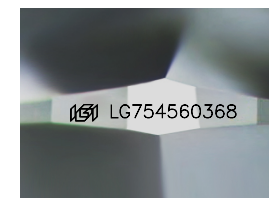
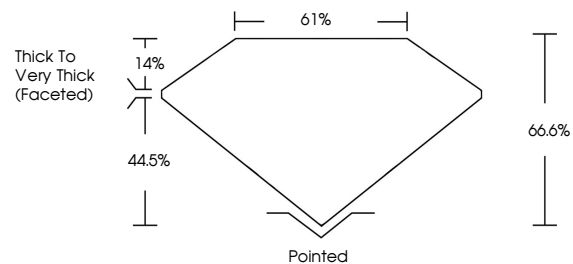
Carat Weight **9.02 CARATS**
Color Grade **FANCY VIVID YELLOW**
Clarity Grade **VS 2**

ADDITIONAL GRADING INFORMATION

Polish **EXCELLENT**
Symmetry **EXCELLENT**
Fluorescence **NONE**
Inscription(s) **IGI LG754560368**

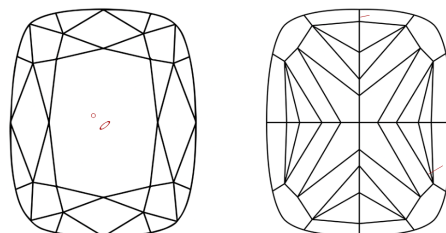
Comments: This Laboratory Grown Diamond was created by Chemical Vapor Deposition (CVD) growth process.

PROPORTIONS



Sample Image Used

CLARITY CHARACTERISTICS



KEY TO SYMBOLS

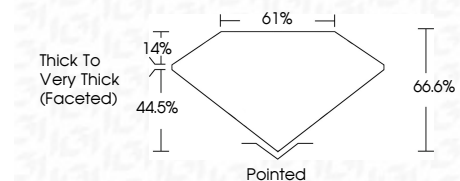
Red symbols indicate internal characteristics.
Green symbols indicate external characteristics.

COLOR

D E F G H I J Faint Very Light Light

CLARITY

| FL | IF | VS ¹⁻² | VS ¹⁻² | SI ¹⁻² | I ¹⁻³ |
|----------|---------------------|-----------------------------|------------------------|-------------------|------------------|
| Flawless | Internally Flawless | Very Very Slightly Included | Very Slightly Included | Slightly Included | Included |



ADDITIONAL GRADING INFORMATION

Polish **EXCELLENT**
Symmetry **EXCELLENT**
Fluorescence **NONE**
Inscription(s) **IGI LG754560368**
Comments: This Laboratory Grown Diamond was created by Chemical Vapor Deposition (CVD) growth process.



IGI



December 8, 2025
IGI Report No **LG754560368**
CUSHION MODIFIED BRILLIANT
12.59 X 10.67 X 7.11 MM
Carat Weight **9.02 CARATS**
Color Grade **FANCY VIVID YELLOW**
Clarity Grade **VS 2**
Depth **44.5%**
Table **14%**
Girdle **66.6%**
Culet **Thick to Very Thick (Faceted)**
Pointed
Polish **EXCELLENT**
Symmetry **EXCELLENT**
Fluorescence **NONE**
Inscription(s) **IGI LG754560368**
Comments: This Laboratory Grown Diamond was created by Chemical Vapor Deposition (CVD) growth process.