



ELECTRONIC COPY

LG754559239
Report verification at igi.org



December 15, 2025
IGI Report Number **LG754559239**
Description **LABORATORY GROWN DIAMOND**
Shape and Cutting Style **CUT CORNERED
RECTANGULAR MODIFIED
BRILLIANT**
Measurements **7.89 X 5.85 X 3.95 MM**
GRADING RESULTS
Carat Weight **1.54 CARAT**
Color Grade **FANCY DEEP GREEN**
Clarity Grade **VS 1**

December 15, 2025
IGI Report Number **LG754559239**
Description **LABORATORY GROWN DIAMOND**
Shape and Cutting Style **CUT CORNERED RECTANGULAR
MODIFIED BRILLIANT**
Measurements **7.89 X 5.85 X 3.95 MM**

GRADING RESULTS

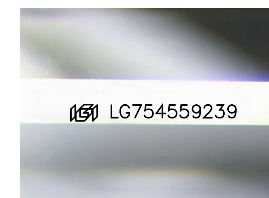
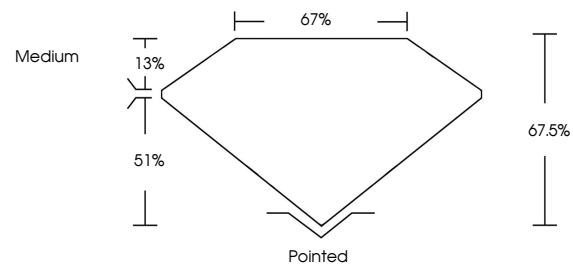
Carat Weight **1.54 CARAT**
Color Grade **FANCY DEEP GREEN**
Clarity Grade **VS 1**

ADDITIONAL GRADING INFORMATION

Polish **VERY GOOD**
Symmetry **VERY GOOD**
Fluorescence **VERY SLIGHT**
Inscription(s) **IGI LG754559239**

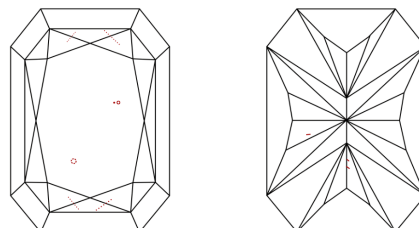
Comments: This Laboratory Grown Diamond was created by Chemical Vapor Deposition (CVD) growth process. Indications of post-growth treatment.

PROPORTIONS



Sample Image Used

CLARITY CHARACTERISTICS



KEY TO SYMBOLS

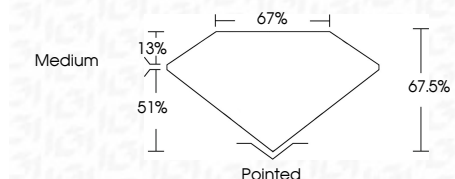
Red symbols indicate internal characteristics.
Green symbols indicate external characteristics.

COLOR

D E F G H I J Faint Very Light Light

CLARITY

FL	IF	VS ¹⁻²	VS ¹⁻²	SI ¹⁻²	I ¹⁻³
Flawless	Internally Flawless	Very Very Slightly Included	Very Slightly Included	Slightly Included	Included



ADDITIONAL GRADING INFORMATION

Polish **VERY GOOD**
Symmetry **VERY GOOD**
Fluorescence **VERY SLIGHT**
Inscription(s) **IGI LG754559239**
Comments: This Laboratory Grown Diamond was created by Chemical Vapor Deposition (CVD) growth process. Indications of post-growth treatment.



December 15, 2025
IGI Report No. **LG754559239**
CUT CORNERED RECT. MODIFIED BRILLIANT
7.89 X 5.85 X 3.95 MM
Carat Weight **1.54 CARAT**
Color Grade **FANCY DEEP GREEN**
Clarity Grade **VS 1**
Depth **67.5%**
Table **67%**
Girdle **Medium**
Culet **Pointed**
Polish **VERY GOOD**
Symmetry **VERY GOOD**
Fluorescence **VERY SLIGHT**
Inscription(s) **IGI LG754559239**

Comments: This Laboratory Grown Diamond was created by Chemical Vapor Deposition (CVD) growth process. Indications of post-growth treatment.