



**INTERNATIONAL
GEMOLOGICAL
INSTITUTE**

ELECTRONIC COPY

LABORATORY GROWN DIAMOND REPORT

December 15, 2025
 IGI Report Number **LG754557592**
 Description **LABORATORY GROWN DIAMOND**
 Shape and Cutting Style **RECTANGULAR PRINCESS CUT**
 Measurements **3.54 X 3.30 X 2.49 MM**

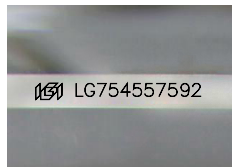
GRADING RESULTS

Carat Weight **0.25 CARAT**
 Color Grade **FANCY BROWNISH YELLOW**
 Clarity Grade **VS 2**

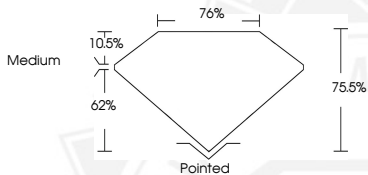
ADDITIONAL GRADING INFORMATION

Polish **GOOD**
 Symmetry **VERY GOOD**
 Fluorescence **SLIGHT**
 Inscription(s) **IGI LG754557592**

Comments: This Laboratory Grown Diamond was created by Chemical Vapor Deposition (CVD) growth process. Indications of post-growth treatment.



Sample Image Used



December 15, 2025
 IGI Report Number **LG754557592**
 RECTANGULAR PRINCESS CUT
 LABORATORY GROWN DIAMOND
 3.54 X 3.30 X 2.49 MM
 Carat Weight **0.25 CARAT**
 Color Grade **FANCY BROWNISH YELLOW**
 Clarity Grade **VS 2**
 Polish **GOOD**
 Symmetry **VERY GOOD**
 Fluorescence **SLIGHT**
 Inscription(s) **IGI LG754557592**

Comments: This Laboratory Grown Diamond was created by Chemical Vapor Deposition (CVD) growth process. Indications of post-growth treatment.



December 15, 2025
 IGI Report Number **LG754557592**
 RECTANGULAR PRINCESS CUT
 LABORATORY GROWN DIAMOND
 3.54 X 3.30 X 2.49 MM
 Carat Weight **0.25 CARAT**
 Color Grade **FANCY BROWNISH YELLOW**
 Clarity Grade **VS 2**
 Polish **GOOD**
 Symmetry **VERY GOOD**
 Fluorescence **SLIGHT**
 Inscription(s) **IGI LG754557592**

Comments: This Laboratory Grown Diamond was created by Chemical Vapor Deposition (CVD) growth process. Indications of post-growth treatment.



THIS DOCUMENT WAS PRODUCED WITH THE FOLLOWING SECURITY MEASURES: SPECIAL DOCUMENT PAPER, INK SCREENS, WATERMARK, BACKGROUND DESIGNS, HOLOGRAM AND OTHER SECURITY FEATURES NOT LISTED AND DO EXCEED DOCUMENT SECURITY INDUSTRY GUIDELINES.

For terms & conditions and to verify this report, please visit www.igi.org