



**ELECTRONIC COPY**

## LABORATORY GROWN DIAMOND REPORT

|                         |                          |
|-------------------------|--------------------------|
| December 3, 2025        |                          |
| IGI Report Number       | LG754557389              |
| Description             | LABORATORY GROWN DIAMOND |
| Shape and Cutting Style | ROUND BRILLIANT          |
| Measurements            | 13.11 - 13.16 X 8.05 MM  |

## GRADING RESULTS

|               |             |
|---------------|-------------|
| Carat Weight  | 8.50 CARATS |
| Color Grade   | F           |
| Clarity Grade | VS 1        |
| Cut Grade     | IDEAL       |

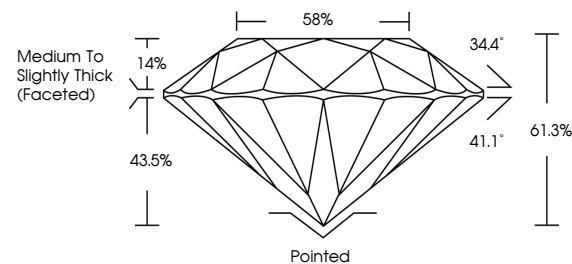
### ADDITIONAL GRADING INFORMATION

|                |   |
|----------------|---|
| Polish         | EXCELLENT   |
| Symmetry       | EXCELLENT   |
| Fluorescence   | NONE  |
| Inscription(s) |  LG754557389 |

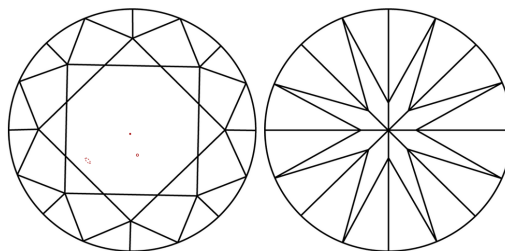
Comments: This Laboratory Grown Diamond was created by Chemical Vapor Deposition (CVD) growth process.  
Type IIa

LG754557389  
Report verification at [igi.org](https://igi.org)

## PROPORTIONS

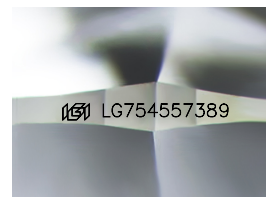


## CLARITY CHARACTERISTICS



## KEY TO SYMBOLS

Red symbols indicate internal characteristics.  
Green symbols indicate external characteristics.



Sample Image Used

**COLOR**

D E F G H I J Faint Very Light Light

## CLARITY

| FL       | IF                  | VVS <sup>1-2</sup> | VS <sup>1-2</sup>      | SI <sup>1-2</sup> | I <sup>1-3</sup> |
|----------|---------------------|--------------------|------------------------|-------------------|------------------|
| Flawless | Internally Flawless | Very Very Included | Very Slightly Included | Slightly Included | Included         |

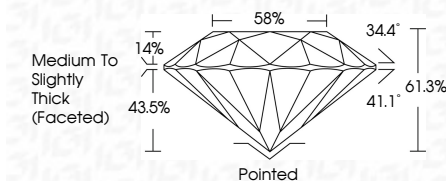
## LABORATORY GROWN DIAMOND REPORT



|                         |                          |
|-------------------------|--------------------------|
| December 3, 2025        |                          |
| IGI Report Number       | LG754557389              |
| Description             | LABORATORY GROWN DIAMOND |
| Shape and Cutting Style | ROUND BRILLIANT          |
| Measurements            | 13.11 - 13.16 X 8.05 MM  |

## GRADING RESULTS

|               |             |
|---------------|-------------|
| Carat Weight  | 8.50 CARATS |
| Color Grade   | F           |
| Clarity Grade | VS 1        |
| Cut Grade     | IDEAL       |



### ADDITIONAL GRADING INFORMATION

|   |                            |
|---|----------------------------|
| Polish  | EXCELLENT                  |
| Symmetry  | EXCELLENT                  |
| Fluorescence  | NONE                       |
| Inscription(s)  | <del>LG5</del> LG754557389 |
| <p>Comments: This Laboratory Grown Diamond was created by Chemical Vapor Deposition (CVD) growth process.</p> <p>Type IIa</p> |                            |



© IGI 2020, International Gemological Institute

FD - 10 20



THIS DOCUMENT WAS PRODUCED WITH THE FOLLOWING SECURITY MEASURES: SPECIAL DOCUMENT PAPER, INK SCREENS, WATERMARK, BACKGROUND DESIGNS, HOLOGRAM AND OTHER SECURITY FEATURES NOT LISTED AND DO EXCEED DOCUMENT SECURITY INDUSTRY GUIDELINES

**www.igi.org**

December 3, 2025  
IGI Report No LG754  
POIND BRILLIANT

|               |                         |                                    |
|---------------|-------------------------|------------------------------------|
| Carat Weight  | 13.11 - 13.16 X 8.05 MM | 8.50 CARATS                        |
| Color Grade   |                         | F                                  |
| Clarity Grade |                         | VS 1                               |
| Cut Grade     |                         | IDEAL                              |
| Depth         |                         | 61.3%                              |
| Table         |                         | 58%                                |
| Girdle        |                         | Medium to Slightly Thick (Faceted) |
| Culet         |                         | Pointed                            |
| Polish        |                         | EXCELLENT                          |
| Symmetry      |                         | EXCELLENT                          |
| Fluorescence  |                         | NONE                               |

**Comments:**  
This Laboratory Grown Diamond was  
created by Chemical Vapor Deposition  
(CVD) growth process.