



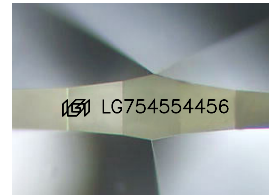
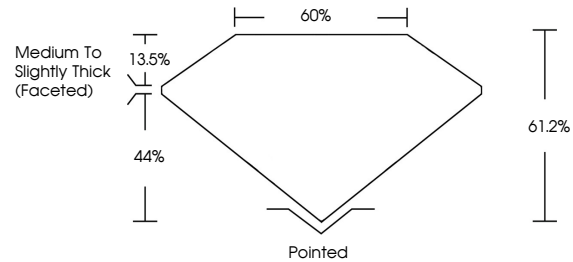
**INTERNATIONAL
GEMOLOGICAL
INSTITUTE**

ELECTRONIC COPY

LABORATORY GROWN DIAMOND REPORT

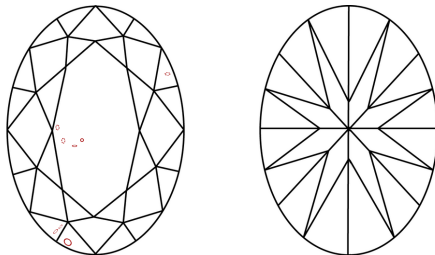
LG754554456
Report verification at igi.org

PROPORTIONS



Sample Image Used

CLARITY CHARACTERISTICS



KEY TO SYMBOLS

Red symbols indicate internal characteristics.
Green symbols indicate external characteristics.

COLOR

D E F G H I J Faint Very Light Light

CLARITY

FL	IF	VVS ¹⁻²	VS ¹⁻²	SI ¹⁻²	I ¹⁻³
Flawless	Internally Flawless	Very Very Slightly Included	Very Slightly Included	Slightly Included	Included

LABORATORY GROWN DIAMOND REPORT



December 8, 2025

IGI Report Number **LG754554456**

Description	LABORATORY GROWN DIAMOND
-------------	--------------------------

Shape and Cutting Style **OVAL BRILLIANT**

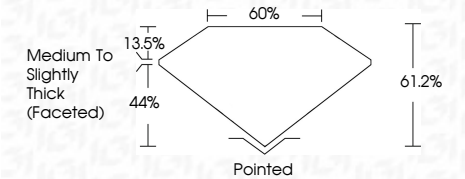
Measurements 10.33 X 7.22 X 4.42 MM

GRADING RESULTS

Carat Weight **2.04 CARATS**

Color Grade **E**

Clarity Grade VS 2



ADDITIONAL GRADING INFORMATION

Polish **EXCELLENT**Symmetry **EXCELLENT**Fluorescence **NONE**Inscription(s)  LG754554456

Comments: This Laboratory Grown Diamond was created by Chemical Vapor Deposition (CVD) growth process.
Type IIa



IGI



© IGI 2020, International Gemological Institute

FD - 10 20

www.igi.org

THIS DOCUMENT WAS PRODUCED WITH THE FOLLOWING SECURITY MEASURES: SPECIAL DOCUMENT PAPER, INK SCREENS, WATERMARK BACKGROUND DESIGNS, HOLOGRAM AND OTHER SECURITY FEATURES NOT LISTED AND DO EXCEED DOCUMENT SECURITY INDUSTRY GUIDELINES.

December 8, 2025
IGI Report No LG754554456
OVAL BRILLIANT

10.33 X 7.22 X 4.42 MM		2.04 CARATS		E	
Carat Weight	Color Grade	Clarity Grade	VS 2	VS 2	VS 2
		Depth	61.2%	61.2%	61.2%
		Table	60%	60%	60%
		Girdle	Medium to slightly Thick (faceted)	Medium to slightly Thick (faceted)	Medium to slightly Thick (faceted)
Culet	Polish	Symmetry	Excellent	Excellent	Excellent
Fluorescence	Inscriptions		None	None	None
				168113745654465	

Comments:
This Laboratory Grown Diamond was created by Chemical Vapor Deposition (CVD) growth process.
Type IIa