



ELECTRONIC COPY

LABORATORY GROWN DIAMOND REPORT

LG754552845
Report verification at igi.org

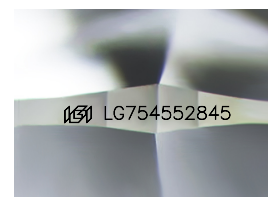
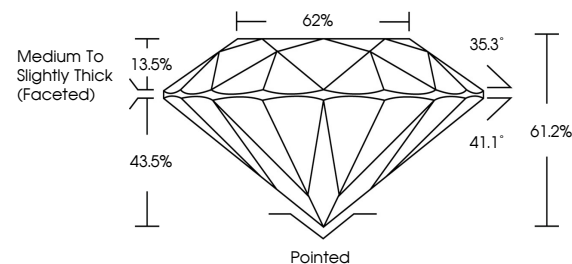
| | |
|-------------------------|--------------------------|
| December 4, 2025 | |
| IGI Report Number | LG754552845 |
| Description | LABORATORY GROWN DIAMOND |
| Shape and Cutting Style | ROUND BRILLIANT |
| Measurements | 8.03 - 8.07 X 4.93 MM |
| GRADING RESULTS | |
| Carat Weight | 2.00 CARATS |
| Color Grade | E |
| Clarity Grade | VVS 2 |
| Cut Grade | EXCELLENT |

ADDITIONAL GRADING INFORMATION

| | |
|----------------|----------------|
| Polish | EXCELLENT |
| Symmetry | EXCELLENT |
| Fluorescence | NONE |
| Inscription(s) | 15 LG754552845 |

Comments: This Laboratory Grown Diamond was created by Chemical Vapor Deposition (CVD) growth process.
Type IIa

PROPORTIONS



Sample Image Used

COLOR

D E F G H I J Faint Very Light Light

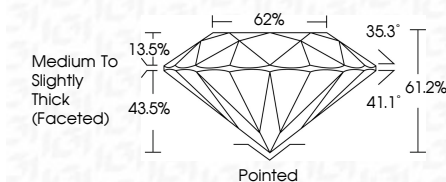
CLARITY

| FL | IF | VVS ¹⁻² | VS ¹⁻² | SI ¹⁻² | I ¹⁻³ |
|----------|---------------------|-----------------------------|------------------------|-------------------|------------------|
| Flawless | Internally Flawless | Very Very Slightly Included | Very Slightly Included | Slightly Included | Included |

LABORATORY GROWN DIAMOND REPORT



| | |
|-------------------------|--------------------------|
| December 4, 2025 | |
| IGI Report Number | LG754552845 |
| Description | LABORATORY GROWN DIAMOND |
| Shape and Cutting Style | ROUND BRILLIANT |
| Measurements | 8.03 - 8.07 X 4.93 MM |
| GRADING RESULTS | |
| Carat Weight | 2.00 CARATS |
| Color Grade | E |
| Clarity Grade | VVS 2 |
| Cut Grade | EXCELLENT |



ADDITIONAL GRADING INFORMATION

| | |
|---|---|
| Polish | EXCELLENT |
| Symmetry | EXCELLENT |
| Fluorescence | NONE |
| Inscription(s) |  LG754552845 |
| <p>Comments: This Laboratory Grown Diamond was created by Chemical Vapor Deposition (CVD) growth process.</p> <p>Type IIa</p> | |



© IGI 2020, International Gemological Institute

FD - 10 20



THIS DOCUMENT WAS PRODUCED WITH THE FOLLOWING SECURITY MEASURES: SPECIAL DOCUMENT PAPER, INK SCREENS, WATERMARK, BACKGROUND DESIGNS, HOLOGRAM AND OTHER SECURITY FEATURES NOT LISTED AND DO EXCEED DOCUMENT SECURITY INDUSTRY GUIDELINES

www.igi.org

December 4, 2025
IGI Report No LG7544
ROUND BRILLIANT

8.03 - 8.07 X 4.93 MM

8.03 - 8.07 X 4.93 MM
Carat Weight
2.00 CARATS

| Cardinal Weigill | ZOO CARAIS | E |
|------------------|------------|---|
| Color Grade | | |

| Clarity Grade | WS 2 |
|---------------|------|
| Very Good | 100% |
| Good | 100% |
| Fair | 100% |
| Poor | 100% |
| Very Poor | 100% |

| | | |
|------------|--|-----------|
| Clay Grade | | Vs 2 |
| Cut Grade | | EXCELLENT |

| | |
|-------|-------|
| Depth | 61.2% |
| Table | 62% |

| | |
|--------|--------------------|
| Table | 62% |
| Girdle | Medium To Slightly |

Medium To Slightly Thick (Faceted)

| Culet | Pointed |
|-------|---------|
| | |

| | |
|---------|-----------|
| Current | Polished |
| Polish | EXCELLENT |
| | EXCELLENT |

| | |
|--------------|-----------|
| Symmetry | EXCELLENT |
| Fluorescence | NONE |

| | |
|----------------|-----------------|
| Fluorescence | NONE |
| Inscription(s) | 191 LG754552845 |

Inscription(s)

Comments:
This Laboratory Grown Diamond was

This Laboratory Grown Diamond was created by Chemical Vapor Deposition (CVD) growth process.

(CVD) growth process,
Type IIa

Type IIa