



ELECTRONIC COPY

LABORATORY GROWN DIAMOND REPORT

LG754552788
Report verification at igi.org

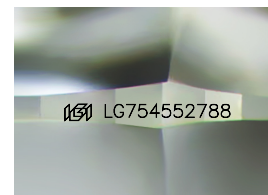
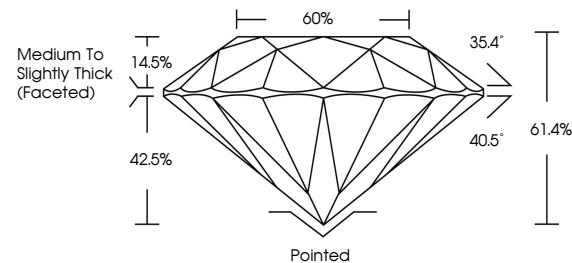
December 3, 2025	
IGI Report Number	LG754552788
Description	LABORATORY GROWN DIAMOND
Shape and Cutting Style	ROUND BRILLIANT
Measurements	8.02 - 8.04 X 4.93 MM
GRADING RESULTS	
Carat Weight	2.01 CARATS
Color Grade	E
Clarity Grade	VVS 2
Cut Grade	EXCELLENT

ADDITIONAL GRADING INFORMATION

Polish	EXCELLENT
Symmetry	EXCELLENT
Fluorescence	NONE
Inscription(s)	 LG754552788

Comments: This Laboratory Grown Diamond was created by Chemical Vapor Deposition (CVD) growth process.
Type IIa

PROPORTIONS



Sample Image Used

COLOR

D E F G H I J Faint Very Light Light

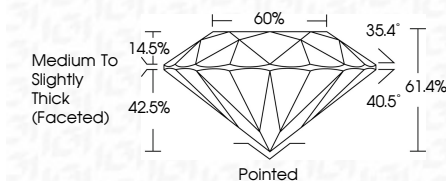
CLARITY

FL	IF	VVS ¹⁻²	VS ¹⁻²	SI ¹⁻²	I ¹⁻³
Flawless	Internally Flawless	Very Very Slightly Included	Very Slightly Included	Slightly Included	Included

LABORATORY GROWN DIAMOND REPORT



December 3, 2025	
IGI Report Number	LG754552788
Description	LABORATORY GROWN DIAMOND
Shape and Cutting Style	ROUND BRILLIANT
Measurements	8.02 - 8.04 X 4.93 MM
GRADING RESULTS	
Carat Weight	2.01 CARATS
Color Grade	E
Clarity Grade	VVS 2
Cut Grade	EXCELLENT



ADDITIONAL GRADING INFORMATION

Polish	EXCELLENT
Symmetry	EXCELLENT
Fluorescence	NONE
Inscription(s)	 LG754552788
<p>Comments: This Laboratory Grown Diamond was created by Chemical Vapor Deposition (CVD) growth process.</p> <p>Type IIa</p>	



© IGI 2020, International Gemological Institute

FD - 10 20



THIS DOCUMENT WAS PRODUCED WITH THE FOLLOWING SECURITY MEASURES: SPECIAL DOCUMENT PAPER, INK SCREENS, WATERMARK, BACKGROUND DESIGNS, HOLOGRAM AND OTHER SECURITY FEATURES NOT LISTED AND DO EXCEED DOCUMENT SECURITY INDUSTRY GUIDELINES

www.igi.org



December 3, 2025
GJ Report No | G754552788

IGI Report No LG75
DOING BRILLIANT

3.02 - 8.04 X 4.93 MM

Carat Weight **2.01 CARATS**

E

Clarity Grade	WS 2
Cut Grade	EXCELLENT

Depth	61.4%
-------	-------

lable	80%
Girdle	Medium To Slightly

Thick (Faceted)

Culet Pointed
Polish EXCELLENT

Symmetry

Fluorescence	NONE
Inscription(s)	151 LG754552788

1

Comments:
This Laboratory Grown Diamond was created by Chemical Vapor Deposition

(CVD) growth process.
Type IIa