



**ELECTRONIC COPY**

LG754549190  
Report verification at igi.org



December 4, 2025

IGI Report Number **LG754549190**

Description **LABORATORY GROWN DIAMOND**

Shape and Cutting Style **EMERALD CUT**

Measurements **11.64 X 7.98 X 5.45 MM**

**GRADING RESULTS**

Carat Weight **5.02 CARATS**

Color Grade **D**

Clarity Grade **VS 1**

December 4, 2025  
IGI Report Number **LG754549190**  
Description **LABORATORY GROWN DIAMOND**  
Shape and Cutting Style **EMERALD CUT**  
Measurements **11.64 X 7.98 X 5.45 MM**

**GRADING RESULTS**

Carat Weight **5.02 CARATS**

Color Grade **D**

Clarity Grade **VS 1**

**ADDITIONAL GRADING INFORMATION**

Polish **EXCELLENT**

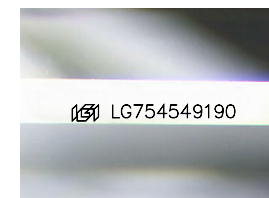
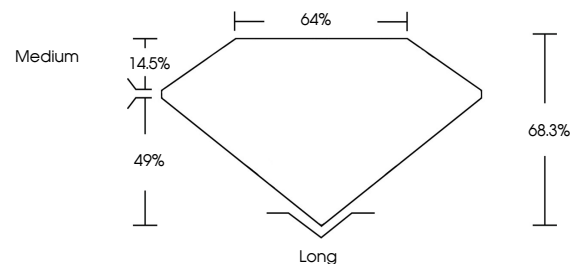
Symmetry **EXCELLENT**

Fluorescence **NONE**

Inscription(s) **IGI LG754549190**

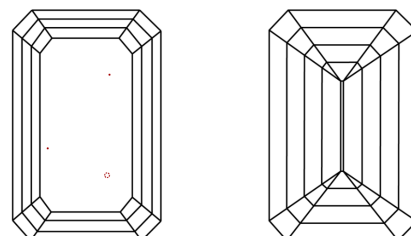
Comments: This Laboratory Grown Diamond was created by Chemical Vapor Deposition (CVD) growth process. Type IIa

**PROPORTIONS**



Sample Image Used

**CLARITY CHARACTERISTICS**



**KEY TO SYMBOLS**

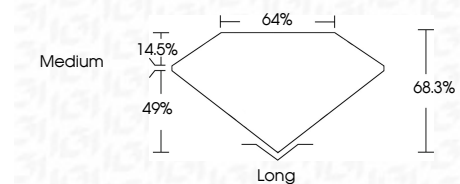
Red symbols indicate internal characteristics.  
Green symbols indicate external characteristics.

**COLOR**

D E F G H I J Faint Very Light Light

**CLARITY**

| FL       | IF                  | VS <sup>1-2</sup>           | VS <sup>1-2</sup>      | SI <sup>1-2</sup> | I <sup>1-3</sup> |
|----------|---------------------|-----------------------------|------------------------|-------------------|------------------|
| Flawless | Internally Flawless | Very Very Slightly Included | Very Slightly Included | Slightly Included | Included         |



**ADDITIONAL GRADING INFORMATION**

Polish **EXCELLENT**

Symmetry **EXCELLENT**

Fluorescence **NONE**

Inscription(s) **IGI LG754549190**

Comments: This Laboratory Grown Diamond was created by Chemical Vapor Deposition (CVD) growth process. Type IIa



**IGI**



December 4, 2025  
IGI Report No LG754549190  
**EMERALD CUT**  
11.64 X 7.98 X 5.45 MM  
5.02 CARATS  
D  
Color Grade  
VS 1  
Depth 49%  
Table 14.5%  
Girdle  
Medium  
Long  
EXCELLENT  
EXCELLENT  
NONE  
IGI LG754549190  
Comments: This Laboratory Grown Diamond was created by Chemical Vapor Deposition (CVD) growth process. Type IIa