



**ELECTRONIC COPY**

LG754548377  
Report verification at igi.org



December 5, 2025

IGI Report Number **LG754548377**

Description **LABORATORY GROWN DIAMOND**

Shape and Cutting Style **ROUND BRILLIANT**

Measurements **9.23 - 9.26 X 5.73 MM**

**GRADING RESULTS**

Carat Weight **3.02 CARATS**

Color Grade **D**

Clarity Grade **VS 1**

Cut Grade **VERY GOOD**

December 5, 2025  
IGI Report Number **LG754548377**  
Description **LABORATORY GROWN DIAMOND**  
Shape and Cutting Style **ROUND BRILLIANT**  
Measurements **9.23 - 9.26 X 5.73 MM**

**GRADING RESULTS**

Carat Weight **3.02 CARATS**

Color Grade **D**

Clarity Grade **VS 1**

Cut Grade **VERY GOOD**

**ADDITIONAL GRADING INFORMATION**

Polish **EXCELLENT**

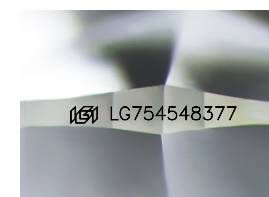
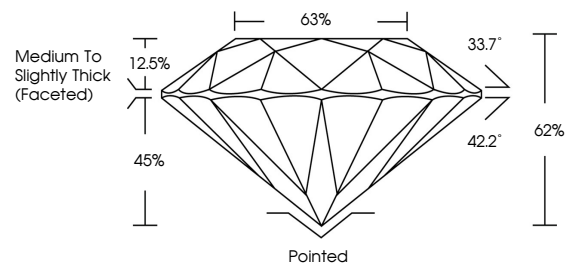
Symmetry **EXCELLENT**

Fluorescence **NONE**

Inscription(s) **IGI LG754548377**

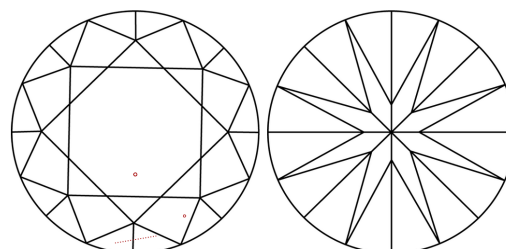
Comments: This Laboratory Grown Diamond was created by Chemical Vapor Deposition (CVD) growth process.  
Type IIa

**PROPORTIONS**



Sample Image Used

**CLARITY CHARACTERISTICS**



**KEY TO SYMBOLS**

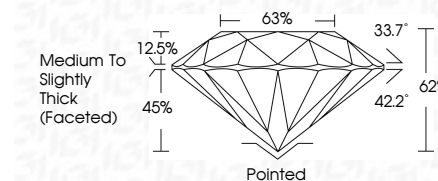
Red symbols indicate internal characteristics.  
Green symbols indicate external characteristics.

**COLOR**

D E F G H I J Faint Very Light Light

**CLARITY**

FL	IF	VS <sup>1-2</sup>	VS <sup>1-2</sup>	SI <sup>1-2</sup>	I <sup>1-3</sup>
Flawless	Internally Flawless	Very Very Slightly Included	Very Slightly Included	Slightly Included	Included



**ADDITIONAL GRADING INFORMATION**

Polish **EXCELLENT**

Symmetry **EXCELLENT**

Fluorescence **NONE**

Inscription(s) **IGI LG754548377**

Comments: This Laboratory Grown Diamond was created by Chemical Vapor Deposition (CVD) growth process.  
Type IIa



December 5, 2025  
IGI Report No LG754548377  
**ROUND BRILLIANT**

**3.02 CARATS**  
Carat Weight  
**D**  
Color Grade  
**VS 1**  
Clarity Grade  
**VERY GOOD**  
Cut Grade  
**62%**  
Depth  
**68%**  
Table  
**Medium To Slightly Thick (Faceted)**  
Girdle  
**Pointed**  
Culet  
**EXCELLENT**  
Polish  
**EXCELLENT**  
Symmetry  
**EXCELLENT**  
Fluorescence  
**NONE**  
Inscription(s)  
IGI LG754548377

Comments: This Laboratory Grown Diamond was created by Chemical Vapor Deposition (CVD) growth process.  
Type IIa