



**ELECTRONIC COPY**

LG754547454  
Report verification at igi.org



December 6, 2025

IGI Report Number **LG754547454**

Description **LABORATORY GROWN DIAMOND**

Shape and Cutting Style **EMERALD CUT**

Measurements **7.21 X 4.91 X 3.12 MM**

**GRADING RESULTS**

Carat Weight **1.10 CARAT**

Color Grade **G**

Clarity Grade **VVS 2**

**LABORATORY GROWN DIAMOND REPORT**

December 6, 2025

IGI Report Number **LG754547454**

Description **LABORATORY GROWN DIAMOND**

Shape and Cutting Style **EMERALD CUT**

Measurements **7.21 X 4.91 X 3.12 MM**

**GRADING RESULTS**

Carat Weight **1.10 CARAT**

Color Grade **G**

Clarity Grade **VVS 2**

**ADDITIONAL GRADING INFORMATION**

Polish **EXCELLENT**

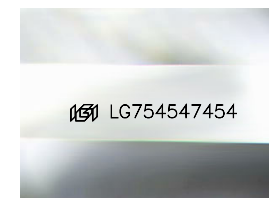
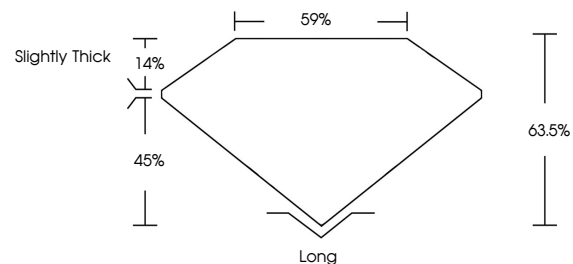
Symmetry **EXCELLENT**

Fluorescence **NONE**

Inscription(s) **IGI LG754547454**

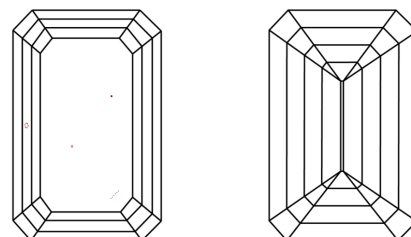
Comments: This Laboratory Grown Diamond was created by Chemical Vapor Deposition (CVD) growth process. Type IIa

**PROPORTIONS**



Sample Image Used

**CLARITY CHARACTERISTICS**



**KEY TO SYMBOLS**

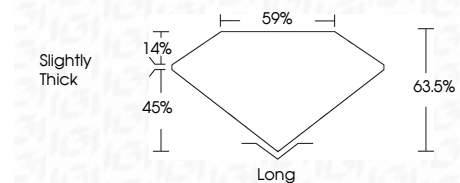
Red symbols indicate internal characteristics.  
Green symbols indicate external characteristics.

**COLOR**

D E F G H I J Faint Very Light Light

**CLARITY**

FL	IF	VVS <sup>1-2</sup>	VS <sup>1-2</sup>	SI <sup>1-2</sup>	I <sup>1-3</sup>
Flawless	Internally Flawless	Very Very Slightly Included	Very Slightly Included	Slightly Included	Included



**ADDITIONAL GRADING INFORMATION**

Polish **EXCELLENT**

Symmetry **EXCELLENT**

Fluorescence **NONE**

Inscription(s) **IGI LG754547454**

Comments: This Laboratory Grown Diamond was created by Chemical Vapor Deposition (CVD) growth process. Type IIa



December 6, 2025  
IGI Report No LG754547454  
**EMERALD CUT**  
7.21 X 4.91 X 3.12 MM  
Carat Weight **1.10 CARAT**  
Color Grade **G**  
Clarity Grade **VVS 2**  
Depth **63.5%**  
Table **59%**  
Girdle **Slightly Thick**  
Culet **Long**  
Polish **EXCELLENT**  
Symmetry **EXCELLENT**  
Fluorescence **NONE**  
Inscription(s) **IGI LG754547454**  
Comments: This Laboratory Grown Diamond was created by Chemical Vapor Deposition (CVD) growth process. Type IIa