



# INTERNATIONAL GEMOLOGICAL INSTITUTE

## LABORATORY GROWN DIAMOND REPORT

December 4, 2025  
IGI Report Number **LG754546620**  
Description **LABORATORY GROWN DIAMOND**  
Shape and Cutting Style **PRINCESS CUT**  
Measurements **4.93 X 4.89 X 3.51 MM**

### GRADING RESULTS

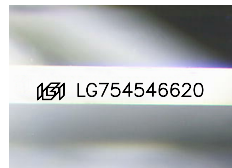
Carat Weight **0.75 CARAT**  
Color Grade **D**  
Clarity Grade **VVS 2**

### ADDITIONAL GRADING INFORMATION

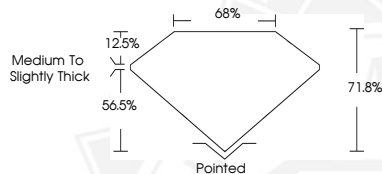
Polish **EXCELLENT**  
Symmetry **EXCELLENT**  
Fluorescence **NONE**  
Inscription(s) **IGI LG754546620**

Comments: This Laboratory Grown Diamond was created by Chemical Vapor Deposition (CVD) growth process. Type IIa

ELECTRONIC COPY



Sample Image Used



THIS DOCUMENT WAS PRODUCED WITH THE FOLLOWING SECURITY MEASURES: SPECIAL DOCUMENT PAPER, INK SCREENS, WATERMARK, BACKGROUND DESIGNS, HOLOGRAM AND OTHER SECURITY FEATURES NOT LISTED AND DO EXCEED DOCUMENT SECURITY INDUSTRY GUIDELINES.

For terms & conditions and to verify this report, please visit [www.igi.org](http://www.igi.org)



December 4, 2025

IGI Report Number **LG754546620**

**PRINCESS CUT**

**LABORATORY GROWN DIAMOND**

**4.93 X 4.89 X 3.51 MM**

Carat Weight **0.75 CARAT**

Color Grade **D**

Clarity Grade **VVS 2**

Polish **EXCELLENT**

Symmetry **EXCELLENT**

Fluorescence **NONE**

Inscription(s) **IGI LG754546620**

Comments: This Laboratory Grown Diamond was created by Chemical Vapor Deposition (CVD) growth process. Type IIa



December 4, 2025

IGI Report Number **LG754546620**

**PRINCESS CUT**

**LABORATORY GROWN DIAMOND**

**4.93 X 4.89 X 3.51 MM**

Carat Weight **0.75 CARAT**

Color Grade **D**

Clarity Grade **VVS 2**

Polish **EXCELLENT**

Symmetry **EXCELLENT**

Fluorescence **NONE**

Inscription(s) **IGI LG754546620**

Comments: This Laboratory Grown Diamond was created by Chemical Vapor Deposition (CVD) growth process. Type IIa