

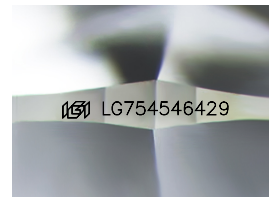
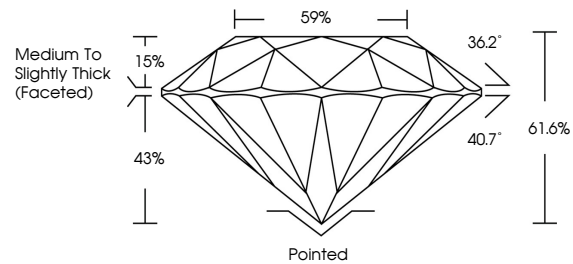


**INTERNATIONAL
GEMOLOGICAL
INSTITUTE**

ELECTRONIC COPY

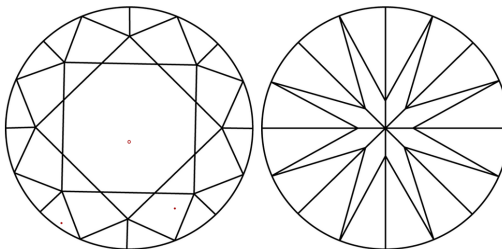
LG754546429
Report verification at igi.org

PROPORTIONS



Sample Image Used

CLARITY CHARACTERISTICS



KEY TO SYMBOLS

Red symbols indicate internal characteristics.
Green symbols indicate external characteristics.

COLOR

D E F G H I J Faint Very Light Light

CLARITY

FL IF WS¹⁻² VS¹⁻² SI¹⁻² I¹⁻³

Flawless	Internally Flawless	Very Very Slightly Included	Very Slightly Included	Slightly Included	Included
----------	---------------------	-----------------------------	------------------------	-------------------	----------



December 6, 2025

IGI Report Number **LG754546429**

Description	LABORATORY GROWN DIAMOND
-------------	--------------------------

Shape and Cutting Style **ROUND BRILLIANT**

Measurements 9.30 - 9.33 X 5.74 MM

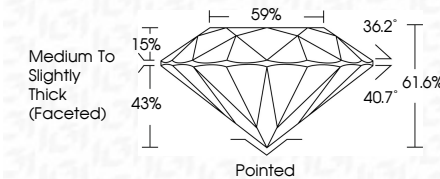
GRADING RESULTS

Carat Weight **3.09 CARATS**

Color Grade	D
-------------	---

Clarity Grade VS 1

Cut Grade **IDEAL**



ADDITIONAL GRADING INFORMATION

Polish **EXCELLENCE**Symmetry **EXCELLENCE**

Fluorescence NONI

Inscription(s) **1131 LG75454642**

Comments: This Laboratory Grown Diamond was created by Chemical Vapor Deposition (CVD) growth process.
Type IIa



IG



© IGI 2020, International Gemological Institute

FD - 10 20

www.igi.org

THIS DOCUMENT WAS PRODUCED WITH THE FOLLOWING SECURITY MEASURES: SPECIAL DOCUMENT PAPER, INK SCREENS, WATERMARK, BACKGROUND DESIGNS, HOLOGRAM AND OTHER SECURITY FEATURES NOT LISTED AND DO EXCEED DOCUMENT SECURITY INDUSTRY GUIDELINES

December 6, 2025
IGI Report No LG754546429
ROUND BRILLIANT

9.30 - 9.33 X 5.74 MM	3.09 CARATS	D
Carat Weight		VS 1
Color Grade	Clarity Grade	IDEAL
Cut Grade	Cut Grade	61.05%
Depth	Table	59%
Girdle	Girdle	Medium to slightly Thick (facet-to)
Culet	Culet	Pointed
Polish	Symmetry	EXCELLENT
Fluorescence	Fluorescence	NONE
Inscriptions	Inscriptions	4641 GTC 464120

Comments:
This Laboratory Grown Diamond was created by Chemical Vapor Deposition (CVD) growth process.