



**INTERNATIONAL  
GEMOLOGICAL  
INSTITUTE**

**ELECTRONIC COPY**

## LABORATORY GROWN DIAMOND REPORT

|                         |  |
|-------------------------|--|
| December 5, 2025        |  |
| IGI Report Number       | LG754546089                                    |
| Description             | LABORATORY GROWN DIAMOND                       |
| Shape and Cutting Style | CUT CORNERED RECTANGULAR<br>MODIFIED BRILLIANT |
| Measurements            | 10.41 X 7.12 X 4.77 MM                         |

## GRADING RESULTS

|               |             |
|---------------|-------------|
| Carat Weight  | 3.04 CARATS |
| Color Grade   | E           |
| Clarity Grade | VVS 2       |

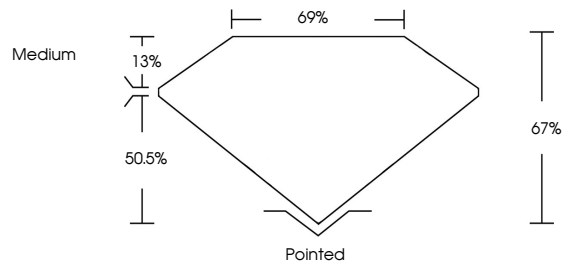
### ADDITIONAL GRADING INFORMATION

|                |   |
|----------------|---|
| Polish         | EXCELLENT   |
| Symmetry       | EXCELLENT   |
| Fluorescence   | NONE  |
| Inscription(s) |  LG754546089 |

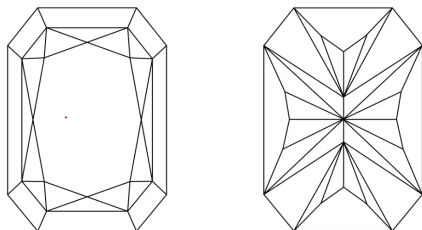
Comments: This Laboratory Grown Diamond was created by Chemical Vapor Deposition (CVD) growth process.  
Type IIa

LG754546089  
Report verification at [igi.org](https://igi.org)

## PROPORTIONS

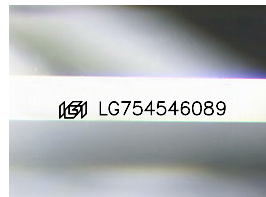


## CLARITY CHARACTERISTICS



## KEY TO SYMBOLS

Red symbols indicate internal characteristics.  
Green symbols indicate external characteristics.



Sample Image Used

## COLOR

D E F G H I J Faint Very Light Light

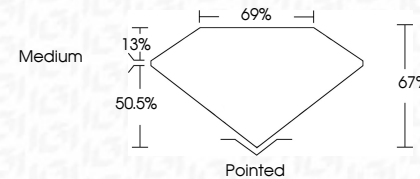
## CLARITY

| FL       | IF                  | VVS <sup>1-2</sup>          | VS <sup>1-2</sup>      | SI <sup>1-2</sup> | I <sup>1-3</sup> |
|----------|---------------------|-----------------------------|------------------------|-------------------|------------------|
| Flawless | Internally Flawless | Very Very Slightly Included | Very Slightly Included | Slightly Included | Included         |

## LABORATORY GROWN DIAMOND REPORT



|                         |   |
|-------------------------|---|
| December 5, 2025        |   |
| IGI Report Number       | LG754546089                                       |
| Description             | LABORATORY GROWN DIAMOND                          |
| Shape and Cutting Style | CUT CORNERED<br>RECTANGULAR MODIFIED<br>BRILLIANT |
| Measurements            | 10.41 X 7.12 X 4.77 MM                            |
| <b>GRADING RESULTS</b>  |   |
| Carat Weight            | 3.04 CARATS                                       |
| Color Grade             | E   |
| Clarity Grade           | VVS 2   |



### ADDITIONAL GRADING INFORMATION

|   |  |
|---|--|
| Polish  | EXCELLENT  |
| Symmetry  | EXCELLENT  |
| Fluorescence  | NONE   |
| Inscription(s)  |  LG754546089 |
| <p>Comments: This Laboratory Grown Diamond was created by Chemical Vapor Deposition (CVD) growth process.</p> <p>Type IIa</p> |  |



© IGI 2020, International Gemological Institute

FD - 10 20

**www.igi.org**

THIS DOCUMENT WAS PRODUCED WITH THE FOLLOWING SECURITY MEASURES: SPECIAL DOCUMENT PAPER, INK SCREENS, WATERMARK, BACKGROUND DESIGNS, HOLOGRAM AND OTHER SECURITY FEATURES NOT LISTED AND DO EXCEED DOCUMENT SECURITY INDUSTRY GUIDELINES.

|                        |  |
|------------------------|--|
| December 5, 2025       |  |
| IGI Report No. LG7654  |  |
| CUT CORNERED RECT      |  |
| 10.41 X 7.12 X 4.77 mm |  |
| Carat Weight           |  |
| Color Grade            |  |
| Clarity Grade          |  |
| Depth                  |  |
| Table                  |  |
| Girdle                 |  |
| Culet                  |  |
| Polish                 |  |
| Symmetry               |  |
| Fluorescence           |  |
| Inscription(s)         |  |

**Comments:**  
This Laboratory Grown Diamond was created by Chemical Vapor Deposition (CVD) growth process.