



**ELECTRONIC COPY**

## LABORATORY GROWN DIAMOND REPORT

|                         |                          |
|-------------------------|--------------------------|
| December 5, 2025        |                          |
| IGI Report Number       | LG754545882              |
| Description             | LABORATORY GROWN DIAMOND |
| Shape and Cutting Style | ROUND BRILLIANT          |
| Measurements            | 9.16 - 9.21 X 5.77 MM    |

## GRADING RESULTS

|               |             |
|---------------|-------------|
| Carat Weight  | 3.03 CARATS |
| Color Grade   | F           |
| Clarity Grade | VVS 2       |
| Cut Grade     | EXCELLENT   |

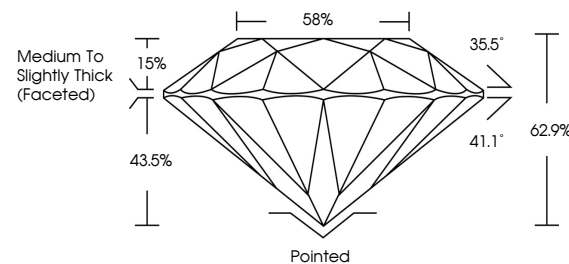
### ADDITIONAL GRADING INFORMATION

|                |   |
|----------------|---|
| Polish         | EXCELLENT   |
| Symmetry       | EXCELLENT   |
| Fluorescence   | NONE  |
| Inscription(s) |  LG754545882 |

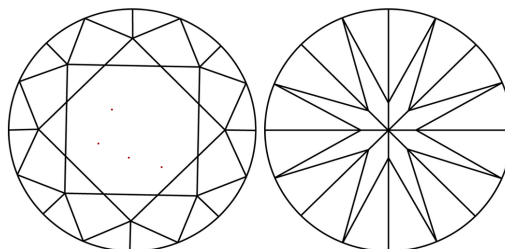
Comments: This Laboratory Grown Diamond was created by Chemical Vapor Deposition (CVD) growth process.  
Type IIa

LG754545882  
Report verification at [igi.org](https://igi.org)

## PROPORTIONS

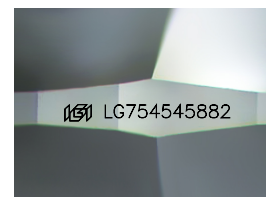


## CLARITY CHARACTERISTICS



## KEY TO SYMBOLS

Red symbols indicate internal characteristics.  
Green symbols indicate external characteristics.



Sample Image Used

## COLOR

D E F G H I J Faint Very Light Light

## CLARITY

| FL       | IF                  | VVS <sup>1-2</sup>          | VS <sup>1-2</sup>      | SI <sup>1-2</sup> | I <sup>1-3</sup> |
|----------|---------------------|-----------------------------|------------------------|-------------------|------------------|
| Flawless | Internally Flawless | Very Very Slightly Included | Very Slightly Included | Slightly Included | Included         |

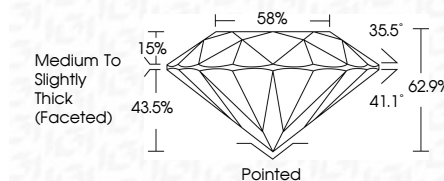
## LABORATORY GROWN DIAMOND REPORT



|                         |                          |
|-------------------------|--------------------------|
| December 5, 2025        |                          |
| IGI Report Number       | LG754545882              |
| Description             | LABORATORY GROWN DIAMOND |
| Shape and Cutting Style | ROUND BRILLIANT          |
| Measurements            | 9.16 - 9.21 X 5.77 MM    |

## GRADING RESULTS

|               |             |
|---------------|-------------|
| Carat Weight  | 3.03 CARATS |
| Color Grade   | F           |
| Clarity Grade | VVS 2       |
| Cut Grade     | EXCELLENT   |



### ADDITIONAL GRADING INFORMATION

|  |                            |
|--|----------------------------|
| Polish   | EXCELLENT                  |
| Symmetry   | EXCELLENT                  |
| Fluorescence   | NONE                       |
| Inscription(s)   | <del>(G)</del> LG754545882 |
| Comments: This Laboratory Grown Diamond was created by Chemical Vapor Deposition (CVD) growth process. |                            |
| Type IIa   |                            |



© IGI 2020, International Gemological Institute

FD - 10 20



THIS DOCUMENT WAS PRODUCED WITH THE FOLLOWING SECURITY MEASURES: SPECIAL DOCUMENT PAPER, INK SCREENS, WATERMARK, BACKGROUND DESIGNS, HOLOGRAM AND OTHER SECURITY FEATURES NOT LISTED AND DO EXCEED DOCUMENT SECURITY INDUSTRY GUIDELINE

**www.igi.org**

December 5, 2025  
 IGI Report No LG754  
 FINDING BRILLIANT

|                 |                       |                                    |  |
|-----------------|-----------------------|------------------------------------|--|
| ROUND BRILLIANT | 9.16 - 9.21 X 5.77 MM | 3.03 CARATS                        |  |
| Color Grade     | Carat Weight          | F                                  |  |
| Clarity Grade   |                       | VVS 2                              |  |
| Cut Grade       |                       | EXCELLENT                          |  |
| Depth           |                       | 62.9%                              |  |
| Table           |                       | 58%                                |  |
| Girdle          |                       | Medium To Slightly Thick (Faceted) |  |
| Culet           |                       | Pointed                            |  |
| Polish          |                       | EXCELLENT                          |  |
| Symmetry        |                       | EXCELLENT                          |  |
| Fluorescence    |                       | NONE                               |  |

**Comments:**  
This Laboratory Grown Diamond was  
created by Chemical Vapor Deposition  
(CVD) growth process.