



ELECTRONIC COPY

LABORATORY GROWN DIAMOND REPORT

December 4, 2025	
IGI Report Number	LG754545340
Description	LABORATORY GROWN DIAMOND
Shape and Cutting Style	PRINCESS CUT
Measurements	7.06 X 6.96 X 4.87 MM

GRADING RESULTS

Carat Weight	2.04 CARATS
Color Grade	F
Clarity Grade	VS 1

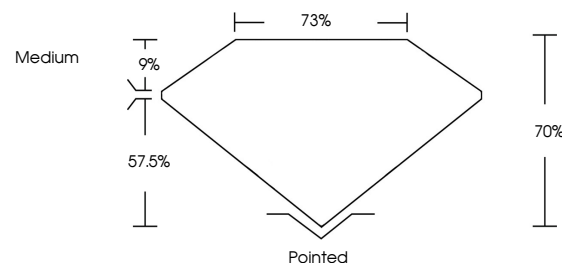
ADDITIONAL GRADING INFORMATION

Polish	EXCELLENT
Symmetry	EXCELLENT
Fluorescence	NONE
Inscription(s)	15 LG754545340

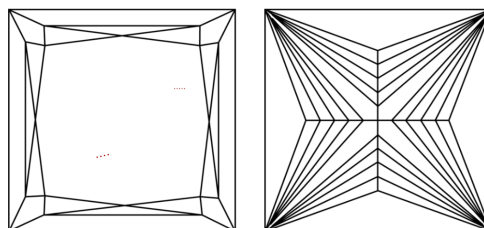
Comments: This Laboratory Grown Diamond was created by Chemical Vapor Deposition (CVD) growth process.
Type IIa

LG754545340
Report verification at igi.org

PROPORTIONS

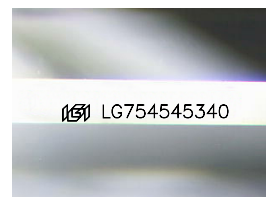


CLARITY CHARACTERISTICS



KEY TO SYMBOLS

Red symbols indicate internal characteristics.
Green symbols indicate external characteristics.



Sample Image Used

COLOR

D E F G H I J Faint Very Light Light

CLARITY

FL	IF	VVS ¹⁻²	VS ¹⁻²	SI ¹⁻²	I ¹⁻³
Flawless	Internally Flawless	Very Very Slightly Included	Very Slightly Included	Slightly Included	Included

LABORATORY GROWN DIAMOND REPORT



December 4, 2025	
IGI Report Number	LG754545340
Description	LABORATORY GROWN DIAMOND
Shape and Cutting Style	PRINCESS CUT
Measurements	7.06 X 6.96 X 4.87 MM

GRADING RESULTS

Carat Weight	2.04 CARATS
Color Grade	F
Clarity Grade	VS 1

ADDITIONAL GRADING INFORMATION

Polish	EXCELLENT
Symmetry	EXCELLENT
Fluorescence	NONE
Inscription(s)	 LG754545340
<p>Comments: This Laboratory Grown Diamond was created by Chemical Vapor Deposition (CVD) growth process.</p> <p>Type IIa</p>	



© IGI 2020, International Gemological Institute

FD - 10 20



THIS DOCUMENT WAS PRODUCED WITH THE FOLLOWING SECURITY MEASURES: SPECIAL DOCUMENT PAPER, INK SCREENS, WATERMARK, BACKGROUND DESIGNS, HOLOGRAM AND OTHER SECURITY FEATURES NOT LISTED AND DO EXCEED DOCUMENT SECURITY INDUSTRY GUIDELINES

www.igi.org

December 4, 2025
 IGI Report No LG754
 PRINCESS CIT

0.05 X 0.06 X 4.87 MM	2.04 CARATS
Carat Weight	VS 1
Color Grade	70%
Clarity Grade	70%
Depth	Medium
Table	Pointed
Girdle	EXCELLENT
Culet	EXCELLENT
Polish	Symmetry
Fluorescence	NONE
	certification

Comments:
This Laboratory Grown Diamond was created by Chemical Vapor Deposition (CVD) growth process.