



# INTERNATIONAL GEMOLOGICAL INSTITUTE

## LABORATORY GROWN DIAMOND REPORT

December 6, 2025  
IGI Report Number **LG754544530**  
Description **LABORATORY GROWN DIAMOND**  
Shape and Cutting Style **PRINCESS CUT**  
Measurements **5.33 X 5.29 X 3.79 MM**

### GRADING RESULTS

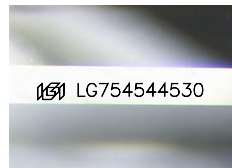
Carat Weight **0.93 CARAT**  
Color Grade **E**  
Clarity Grade **VS 2**

### ADDITIONAL GRADING INFORMATION

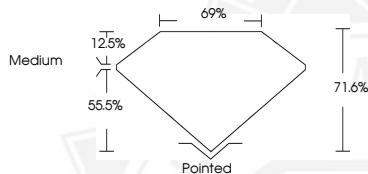
Polish **EXCELLENT**  
Symmetry **EXCELLENT**  
Fluorescence **NONE**  
Inscription(s) **IGI LG754544530**

Comments: This Laboratory Grown Diamond was created by  
Chemical Vapor Deposition (CVD) growth process.  
Type IIa

ELECTRONIC COPY



Sample Image Used



December 6, 2025

IGI Report Number **LG754544530**

**PRINCESS CUT**

**LABORATORY GROWN DIAMOND**

**5.33 X 5.29 X 3.79 MM**

Carat Weight **0.93 CARAT**

Color Grade **E**

Clarity Grade **VS 2**

Polish **EXCELLENT**

Symmetry **EXCELLENT**

Fluorescence **NONE**

Inscription(s) **IGI LG754544530**

Comments: This Laboratory Grown  
Diamond was created by  
Chemical Vapor Deposition (CVD)  
growth process. Type IIa



December 6, 2025

IGI Report Number **LG754544530**

**PRINCESS CUT**

**LABORATORY GROWN DIAMOND**

**5.33 X 5.29 X 3.79 MM**

Carat Weight **0.93 CARAT**

Color Grade **E**

Clarity Grade **VS 2**

Polish **EXCELLENT**

Symmetry **EXCELLENT**

Fluorescence **NONE**

Inscription(s) **IGI LG754544530**

Comments: This Laboratory Grown  
Diamond was created by  
Chemical Vapor Deposition (CVD)  
growth process. Type IIa



THIS DOCUMENT WAS PRODUCED WITH THE FOLLOWING SECURITY MEASURES: SPECIAL DOCUMENT PAPER, INK SCREENS, WATERMARK, BACKGROUND DESIGNS, HOLOGRAM AND OTHER SECURITY FEATURES NOT LISTED AND DO EXCEED DOCUMENT SECURITY INDUSTRY GUIDELINES.

For terms & conditions and to verify this report, please visit [www.igi.org](http://www.igi.org)