



ELECTRONIC COPY

LABORATORY GROWN DIAMOND REPORT

December 4, 2025	
IGI Report Number	LG754540122
Description	LABORATORY GROWN DIAMOND
Shape and Cutting Style	ROUND BRILLIANT
Measurements	12.22 - 12.30 X 7.17 MM

GRADING RESULTS

Carat Weight	6.60 CARATS
Color Grade	E
Clarity Grade	VVS 2
Cut Grade	EXCELLENT

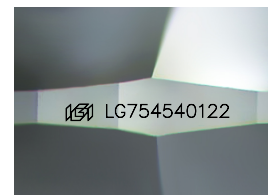
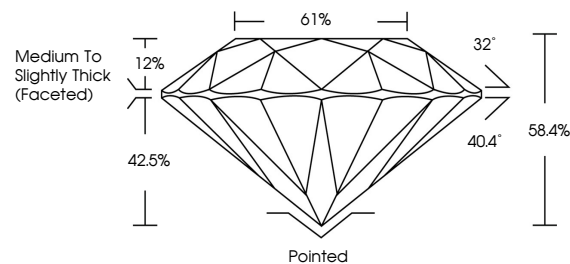
ADDITIONAL GRADING INFORMATION

Polish	EXCELLENT
Symmetry	EXCELLENT
Fluorescence	NONE
Inscription(s)	 LG754540122

Comments: This Laboratory Grown Diamond was created by Chemical Vapor Deposition (CVD) growth process.
Type IIa

LG754540122
Report verification at igi.org

PROPORTIONS



Sample Image Used

COLOR

D E F G H I J Faint Very Light Light

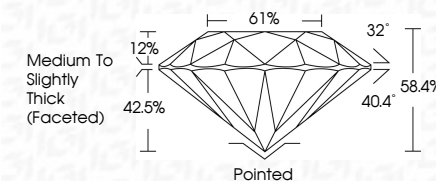
CLARITY

FL	IF	VVS ¹⁻²	VS ¹⁻²	SI ¹⁻²	I ¹⁻³
Flawless	Internally Flawless	Very Very Slightly Included	Very Slightly Included	Slightly Included	Included

LABORATORY GROWN DIAMOND REPORT



December 4, 2025	
IGI Report Number	LG754540122
Description	LABORATORY GROWN DIAMOND
Shape and Cutting Style	ROUND BRILLIANT
Measurements	12.22 - 12.30 X 7.17 MM
GRADING RESULTS	
Carat Weight	6.60 CARATS
Color Grade	E
Clarity Grade	VVS 2
Cut Grade	EXCELLENT



ADDITIONAL GRADING INFORMATION

Polish	EXCELLENT
Symmetry	EXCELLENT
Fluorescence	NONE
Inscription(s)	 LG754540122
<p>Comments: This Laboratory Grown Diamond was created by Chemical Vapor Deposition (CVD) growth process.</p> <p>Type IIa</p>	



© IGI 2020, International Gemological Institute

FD - 10 20

www.igi.org



THIS DOCUMENT WAS PRODUCED WITH THE FOLLOWING SECURITY MEASURES: SPECIAL DOCUMENT PAPER, INK SCREENS, WATERMARK, BACKGROUND DESIGNS, HOLOGRAM AND OTHER SECURITY FEATURES NOT LISTED AND DO EXCEED DOCUMENT SECURITY INDUSTRY GUIDELINE

December 4, 2025
IGI Report No LG754
POIND BRILLIANT

INTERVIEW QUESTIONS

12.22 - 12.30 X 7.17 MM
6.60 CARATS

1222 - 1230 X 7.17 mm	6.60 CARATS
Carat Weight	
Color Grade	

Color Grade	E
Clarity Grade	WS2

Clay Grade		VS 2
Out Grade		EXCELLENT

Depth	58.4%
Table	61%

table	61%
Girdle	Medium To Slightly Thick (52%)

Thick (Faceted)	Related
-----------------	---------

Culet	Pointed
Polish	EXCELLENT

Symmetry	EXCELLENT
Fluorescence	NONE

Fluorescence	NONE
Inscription(s)	151 LG754540122

Comments:

This Laboratory Grown Diamond was created by Chemical Vapor Deposition

(CVD) growth process,
Type IIa