



**ELECTRONIC COPY**

LG754540121  
Report verification at [igi.org](http://igi.org)



December 5, 2025

IGI Report Number **LG754540121**

Description **LABORATORY GROWN DIAMOND**

Shape and Cutting Style **ROUND BRILLIANT**

Measurements **11.55 - 11.62 X 6.99 MM**

**GRADING RESULTS**

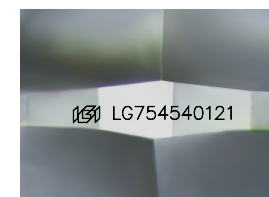
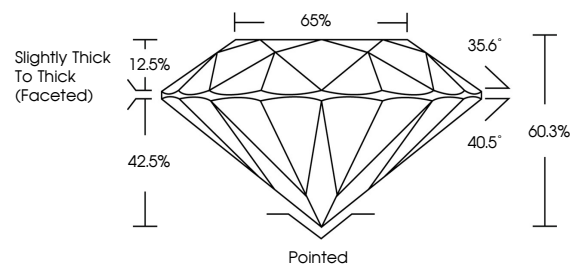
Carat Weight **6.00 CARATS**

Color Grade **E**

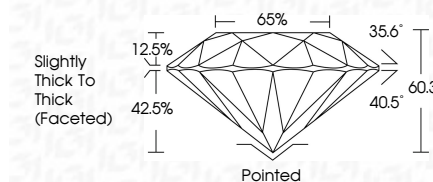
Clarity Grade **VVS 2**

Cut Grade **VERY GOOD**

**PROPORTIONS**



Sample Image Used



December 5, 2025  
IGI Report Number **LG754540121**  
Description **LABORATORY GROWN DIAMOND**  
Shape and Cutting Style **ROUND BRILLIANT**  
Measurements **11.55 - 11.62 X 6.99 MM**

**GRADING RESULTS**

Carat Weight **6.00 CARATS**  
Color Grade **E**  
Clarity Grade **VVS 2**  
Cut Grade **VERY GOOD**

**ADDITIONAL GRADING INFORMATION**

Polish **EXCELLENT**  
Symmetry **EXCELLENT**  
Fluorescence **NONE**  
Inscription(s) **IGI LG754540121**

Comments: This Laboratory Grown Diamond was created by Chemical Vapor Deposition (CVD) growth process. Type IIa

**COLOR**

D E F G H I J Faint Very Light Light

**CLARITY**

FL	IF	VVS <sup>1-2</sup>	VS <sup>1-2</sup>	SI <sup>1-2</sup>	I <sup>1-3</sup>
Flawless	Internally Flawless	Very Very Slightly Included	Very Slightly Included	Slightly Included	Included

**ADDITIONAL GRADING INFORMATION**

Polish **EXCELLENT**  
Symmetry **EXCELLENT**  
Fluorescence **NONE**  
Inscription(s) **IGI LG754540121**  
Comments: This Laboratory Grown Diamond was created by Chemical Vapor Deposition (CVD) growth process. Type IIa



December 5, 2025  
IGI Report No LG754540121  
**ROUND BRILLIANT**  
11.55 - 11.62 X 6.99 MM  
6.00 CARATS  
E  
VVS 2  
VERY GOOD  
60.3%  
65%  
Slightly Thick To Thick (Faceted)  
Pointed  
EXCELLENT  
EXCELLENT  
NONE  
IGI LG754540121  
Comments: This Laboratory Grown Diamond was created by Chemical Vapor Deposition (CVD) growth process. Type IIa