

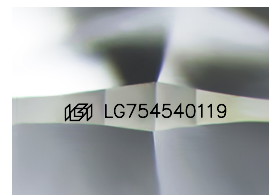
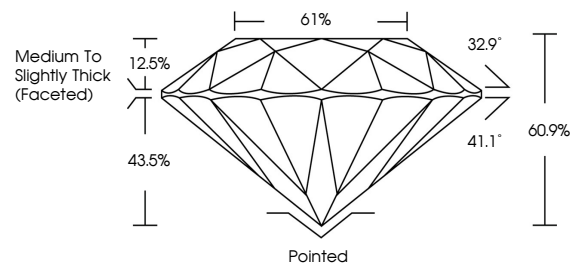


**ELECTRONIC COPY**

## LABORATORY GROWN DIAMOND REPORT

LG754540119  
Report verification at [igi.org](https://igi.org)

## PROPORTIONS



Sample Image Used

## COLOR

D E F G H I J Faint Very Light Light

## CLARITY

| FL       | IF                  | VVS <sup>1-2</sup>          | VS <sup>1-2</sup>      | SI <sup>1-2</sup> | I <sup>1-3</sup> |
|----------|---------------------|-----------------------------|------------------------|-------------------|------------------|
| Flawless | Internally Flawless | Very Very Slightly Included | Very Slightly Included | Slightly Included | Included         |

## LABORATORY GROWN DIAMOND REPORT



December 4, 2025

IGI Report Number **LG754540119**Description **LABORATORY GROWN DIAMOND**Shape and Cutting Style **ROUND BRILLIANT**

Measurements 11.64 - 11.70 X 7.12 MM

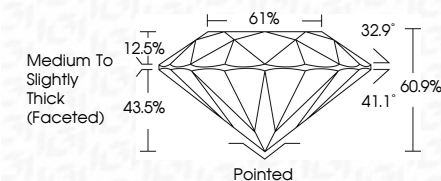
## GRADING RESULTS

Carat Weight **6.04 CARATS**

Color Grade E

Clarity Grade **VVS 2**

Cut Grade **EXCELLENT**



### ADDITIONAL GRADING INFORMATION

Polish **EXCELLENT**Symmetry **EXCELLENT**Fluorescence **NONE**Inscription(s)  LG754540119

Comments: This Laboratory Grown Diamond was created by Chemical Vapor Deposition (CVD) growth process.  
Type IIa



IG



© IGI 2020, International Gemological Institute

FD - 10 20

**www.igi.org**



THIS DOCUMENT WAS PRODUCED WITH THE FOLLOWING SECURITY MEASURES: SPECIAL DOCUMENT PAPER, INK SCREENS, WATERMARK, BACKGROUND DESIGNS, HOLOGRAM AND OTHER SECURITY FEATURES NOT LISTED AND DO EXCEED DOCUMENT SECURITY INDUSTRY GUIDELINES

December 4, 2025  
 IGI Report No LG754  
 SOUND BRILLIANT

|                         |                                  |
|-------------------------|----------------------------------|
| 11.64 - 11.70 X 7.12 MM | 6.04 CARATS                      |
| Carat Weight            |                                  |
| Color Grade             | E                                |
| Clarity Grade           | VVS 2                            |
| Cut Grade               | EXCELLENT                        |
| Depth                   | 61.7%                            |
| Table                   | Medium to Slightly Thick Faceted |
| Girdle                  |                                  |
| Culet                   | Pointed                          |
| Polish                  | EXCELLENT                        |
| Symmetry                | EXCELLENT                        |
| Fluorescence            | NONE                             |
| Report #                | 4291 (275454)0119                |

**Comments:**  
This Laboratory Grown Diamond was  
created by Chemical Vapor Deposition  
(CVD) growth process.