



**ELECTRONIC COPY**

LG754539482  
Report verification at igi.org



December 11, 2025  
IGI Report Number **LG754539482**  
Description **LABORATORY GROWN DIAMOND**  
Shape and Cutting Style **EMERALD CUT**  
Measurements **12.55 X 8.57 X 5.58 MM**  
**GRADING RESULTS**  
Carat Weight **5.85 CARATS**  
Color Grade **FANCY INTENSE PINK**  
Clarity Grade **VVS 2**

December 11, 2025  
IGI Report Number **LG754539482**  
Description **LABORATORY GROWN DIAMOND**  
Shape and Cutting Style **EMERALD CUT**  
Measurements **12.55 X 8.57 X 5.58 MM**

**GRADING RESULTS**

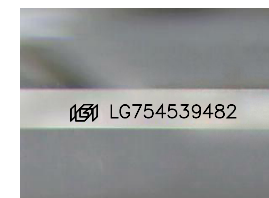
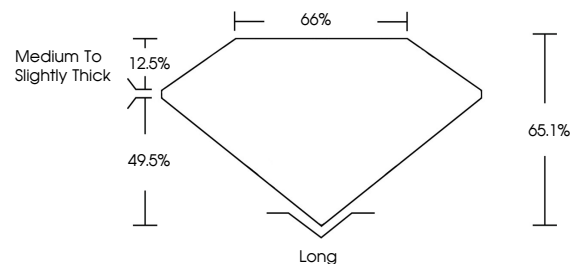
Carat Weight **5.85 CARATS**  
Color Grade **FANCY INTENSE PINK**  
Clarity Grade **VVS 2**

**ADDITIONAL GRADING INFORMATION**

Polish **EXCELLENT**  
Symmetry **EXCELLENT**  
Fluorescence **STRONG**  
Inscription(s) **LG754539482**

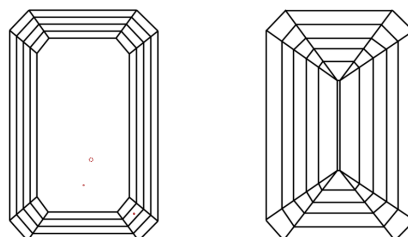
Comments: This Laboratory Grown Diamond was created by Chemical Vapor Deposition (CVD) growth process.  
Indications of post-growth treatment.

**PROPORTIONS**



Sample Image Used

**CLARITY CHARACTERISTICS**



**KEY TO SYMBOLS**

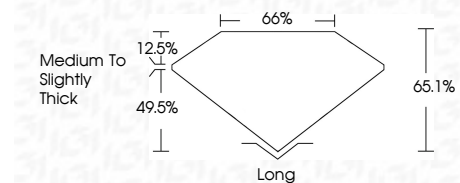
Red symbols indicate internal characteristics.  
Green symbols indicate external characteristics.

**COLOR**

D E F G H I J Faint Very Light Light

**CLARITY**

FL	IF	VVS <sup>1-2</sup>	VS <sup>1-2</sup>	SI <sup>1-2</sup>	I <sup>1-3</sup>
Flawless	Internally Flawless	Very Very Slightly Included	Very Slightly Included	Slightly Included	Included



**ADDITIONAL GRADING INFORMATION**

Polish **EXCELLENT**  
Symmetry **EXCELLENT**  
Fluorescence **STRONG**  
Inscription(s) **LG754539482**  
Comments: This Laboratory Grown Diamond was created by Chemical Vapor Deposition (CVD) growth process.  
Indications of post-growth treatment.



December 11, 2025  
IGI Report No **LG754539482**  
**EMERALD CUT**  
**5.85 CARATS**  
Carat Weight  
**FANCY INTENSE PINK**  
Color Grade  
**VVS 2**  
Clarity Grade  
**65.1%**  
Table  
**65%**  
Girdle  
**Medium to Slightly Thick**  
Culet  
**Long**  
Polish  
**EXCELLENT**  
Symmetry  
**EXCELLENT**  
Fluorescence  
**STRONG**  
Inscription(s)  
 **LG754539482**  
Comments: This Laboratory Grown Diamond was created by Chemical Vapor Deposition (CVD) growth process.  
Indications of post-growth treatment.