



**LABORATORY GROWN DIAMOND REPORT**

December 9, 2025  
 IGI Report Number **LG754539438**  
 Description **LABORATORY GROWN DIAMOND**  
 Shape and Cutting Style **ROUND BRILLIANT**  
 Measurements **4.64 - 4.67 X 2.80 MM**

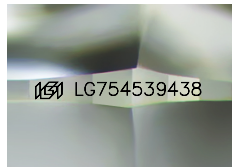
**GRADING RESULTS**

Carat Weight **0.38 CARAT**  
 Color Grade **FANCY VIVID PINK**  
 Clarity Grade **VVS 2**  
 Cut Grade **EXCELLENT**

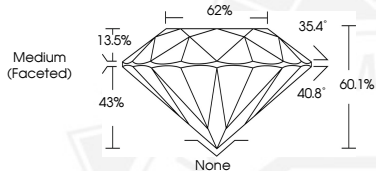
**ADDITIONAL GRADING INFORMATION**

Polish **EXCELLENT**  
 Symmetry **EXCELLENT**  
 Fluorescence **SLIGHT**  
 Inscription(s) **IGI LG754539438**

Comments: This Laboratory Grown Diamond was created by Chemical Vapor Deposition (CVD) growth process. Indications of post-growth treatment.



Sample Image Used



December 9, 2025  
 IGI Report Number **LG754539438**  
 ROUND BRILLIANT  
 LABORATORY GROWN DIAMOND  
 4.64 - 4.67 X 2.80 MM  
 Carat Weight **0.38 CARAT**  
 Color Grade **FANCY VIVID PINK**  
 Clarity Grade **VVS 2**  
 Cut Grade **EXCELLENT**  
 Polish **EXCELLENT**  
 Symmetry **EXCELLENT**  
 Fluorescence **SLIGHT**  
 Inscription(s) **IGI LG754539438**

Comments: This Laboratory Grown Diamond was created by Chemical Vapor Deposition (CVD) growth process. Indications of post-growth treatment.



December 9, 2025  
 IGI Report Number **LG754539438**  
 ROUND BRILLIANT  
 LABORATORY GROWN DIAMOND  
 4.64 - 4.67 X 2.80 MM  
 Carat Weight **0.38 CARAT**  
 Color Grade **FANCY VIVID PINK**  
 Clarity Grade **VVS 2**  
 Cut Grade **EXCELLENT**  
 Polish **EXCELLENT**  
 Symmetry **EXCELLENT**  
 Fluorescence **SLIGHT**  
 Inscription(s) **IGI LG754539438**

Comments: This Laboratory Grown Diamond was created by Chemical Vapor Deposition (CVD) growth process. Indications of post-growth treatment.



THIS DOCUMENT WAS PRODUCED WITH THE FOLLOWING SECURITY MEASURES: SPECIAL DOCUMENT PAPER, INK SCREENS, WATERMARK, BACKGROUND DESIGNS, HOLOGRAM AND OTHER SECURITY FEATURES NOT LISTED AND DO EXCEED DOCUMENT SECURITY INDUSTRY GUIDELINES.