



ELECTRONIC COPY

LABORATORY GROWN DIAMOND REPORT

December 4, 2025  
IGI Report Number **LG754538958**  
Description **LABORATORY GROWN DIAMOND**  
Shape and Cutting Style **HEXAGONAL MODIFIED BRILLIANT**  
Measurements **13.00 X 6.35 X 3.97 MM**

GRADING RESULTS

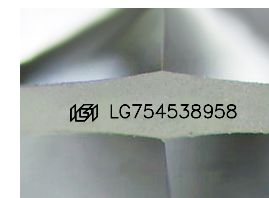
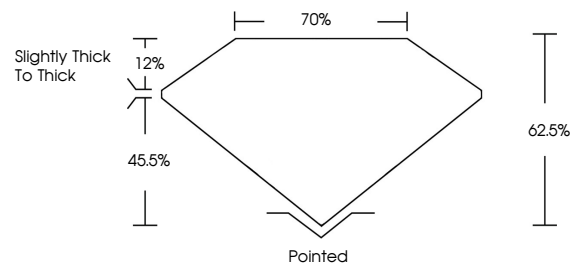
Carat Weight **2.15 CARATS**  
Color Grade **F**  
Clarity Grade **VVS 2**

ADDITIONAL GRADING INFORMATION

Polish **VERY GOOD**  
Symmetry **EXCELLENT**  
Fluorescence **NONE**  
Inscription(s) **IGI LG754538958**

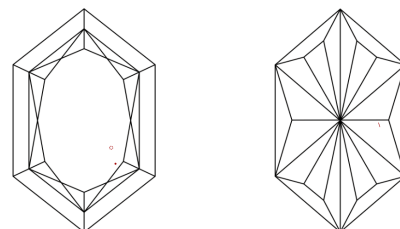
Comments: This Laboratory Grown Diamond was created by Chemical Vapor Deposition (CVD) growth process.  
Type IIa

PROPORTIONS



Sample Image Used

CLARITY CHARACTERISTICS



KEY TO SYMBOLS

Red symbols indicate internal characteristics.  
Green symbols indicate external characteristics.

COLOR

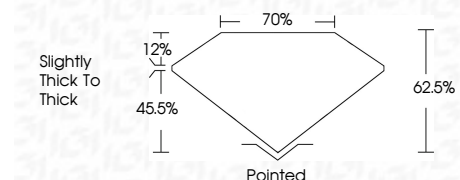
D E F G H I J Faint Very Light Light

CLARITY

FL IF VVS<sup>1-2</sup> VS<sup>1-2</sup> SI<sup>1-2</sup> I<sup>1-3</sup>  
Flawless Internally Flawless Very Very Slightly Included Very Slightly Included Slightly Included Included



December 4, 2025  
IGI Report Number **LG754538958**  
Description **LABORATORY GROWN DIAMOND**  
Shape and Cutting Style **HEXAGONAL MODIFIED BRILLIANT**  
Measurements **13.00 X 6.35 X 3.97 MM**  
**GRADING RESULTS**  
Carat Weight **2.15 CARATS**  
Color Grade **F**  
Clarity Grade **VVS 2**



ADDITIONAL GRADING INFORMATION

Polish **VERY GOOD**  
Symmetry **EXCELLENT**  
Fluorescence **NONE**  
Inscription(s) **IGI LG754538958**  
Comments: This Laboratory Grown Diamond was created by Chemical Vapor Deposition (CVD) growth process.  
Type IIa



December 4, 2025  
IGI Report No **LG754538958**  
**HEXAGONAL MODIFIED BRILLIANT**  
13.00 X 6.35 X 3.97 MM  
Carat Weight **2.15 CARATS**  
Color Grade **F**  
Clarity Grade **VVS 2**  
Table **62.5%**  
Girdle **70%**  
Slightly thick to thick  
Culet **Pointed**  
Polish **VERY GOOD**  
Symmetry **EXCELLENT**  
Fluorescence **NONE**  
Inscription(s) **IGI LG754538958**  
Comments: This Laboratory Grown Diamond was created by Chemical Vapor Deposition (CVD) growth process.  
Type IIa