



ELECTRONIC COPY

LG754538715
Report verification at igi.org



December 5, 2025
IGI Report Number LG754538715
Description LABORATORY GROWN DIAMOND
Shape and Cutting Style EMERALD CUT
Measurements 9.80 X 6.93 X 4.69 MM

GRADING RESULTS

Carat Weight 3.10 CARATS
Color Grade F
Clarity Grade VS 1

December 5, 2025
IGI Report Number LG754538715
Description LABORATORY GROWN DIAMOND
Shape and Cutting Style EMERALD CUT
Measurements 9.80 X 6.93 X 4.69 MM

GRADING RESULTS

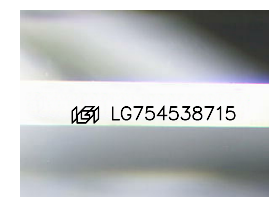
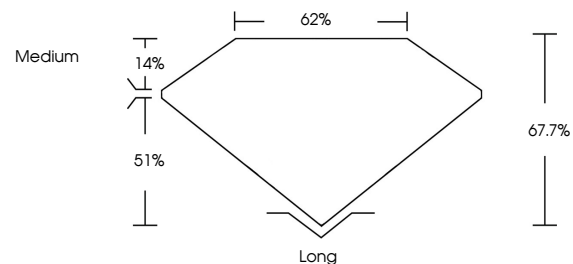
Carat Weight 3.10 CARATS
Color Grade F
Clarity Grade VS 1

ADDITIONAL GRADING INFORMATION

Polish EXCELLENT
Symmetry EXCELLENT
Fluorescence NONE
Inscription(s) LG754538715

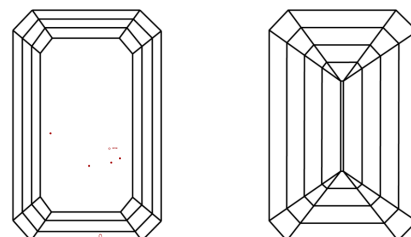
Comments: This Laboratory Grown Diamond was created by Chemical Vapor Deposition (CVD) growth process. Type IIa

PROPORTIONS



Sample Image Used

CLARITY CHARACTERISTICS



KEY TO SYMBOLS

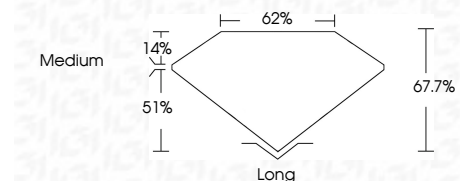
Red symbols indicate internal characteristics.
Green symbols indicate external characteristics.

COLOR

D E F G H I J Faint Very Light Light

CLARITY

FL IF VS 1-2 VS 2-3 SI 1-2 I 1-3
Flawless Internally Flawless Very Very Slightly Included Very Slightly Included Slightly Included Included



ADDITIONAL GRADING INFORMATION

Polish EXCELLENT
Symmetry EXCELLENT
Fluorescence NONE
Inscription(s) LG754538715
Comments: This Laboratory Grown Diamond was created by Chemical Vapor Deposition (CVD) growth process. Type IIa



December 5, 2025
IGI Report No LG754538715
EMERALD CUT
3.10 CARATS F
9.80 X 6.93 X 4.69 MM
Color Grade F
Clarity Grade VS 1
Depth 67.7%
Table 62%
Girdle Medium
Culet Long
Polish EXCELLENT
Symmetry EXCELLENT
Fluorescence NONE
Inscription(s) LG754538715
Comments: This Laboratory Grown Diamond was created by Chemical Vapor Deposition (CVD) growth process. Type IIa