



ELECTRONIC COPY

LG754535296
Report verification at igi.org



December 23, 2025

IGI Report Number **LG754535296**

Description **LABORATORY GROWN DIAMOND**

Shape and Cutting Style **PEAR MODIFIED BRILLIANT**

Measurements **9.19 X 5.43 X 3.01 MM**

GRADING RESULTS

Carat Weight **1.05 CARAT**

Color Grade **FANCY INTENSE YELLOW**

Clarity Grade **VVS 2**

December 23, 2025
IGI Report Number **LG754535296**
Description **LABORATORY GROWN DIAMOND**
Shape and Cutting Style **PEAR MODIFIED BRILLIANT**
Measurements **9.19 X 5.43 X 3.01 MM**

GRADING RESULTS

Carat Weight **1.05 CARAT**

Color Grade **FANCY INTENSE YELLOW**

Clarity Grade **VVS 2**

ADDITIONAL GRADING INFORMATION

Polish **VERY GOOD**

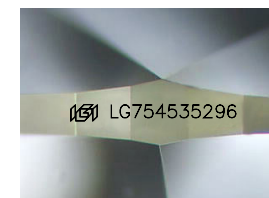
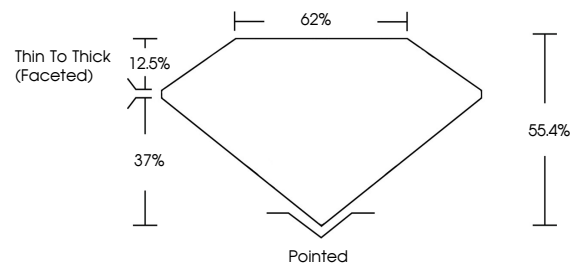
Symmetry **VERY GOOD**

Fluorescence **VERY SLIGHT**

Inscription(s) **IGI LG754535296**

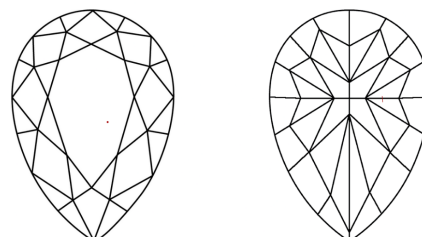
Comments: This Laboratory Grown Diamond was created by Chemical Vapor Deposition (CVD) growth process. Indications of post-growth treatment.

PROPORTIONS



Sample Image Used

CLARITY CHARACTERISTICS



KEY TO SYMBOLS

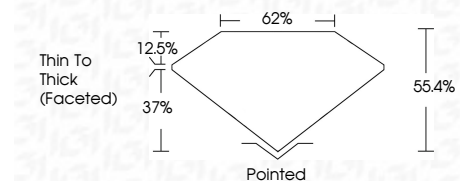
Red symbols indicate internal characteristics.
Green symbols indicate external characteristics.

COLOR

D E F G H I J Faint Very Light Light

CLARITY

FL	IF	VVS ¹⁻²	VS ¹⁻²	SI ¹⁻²	I ¹⁻³
Flawless	Internally Flawless	Very Very Slightly Included	Very Slightly Included	Slightly Included	Included



ADDITIONAL GRADING INFORMATION

Polish **VERY GOOD**

Symmetry **VERY GOOD**

Fluorescence **VERY SLIGHT**

Inscription(s) **IGI LG754535296**

Comments: This Laboratory Grown Diamond was created by Chemical Vapor Deposition (CVD) growth process. Indications of post-growth treatment.



IGI



December 23, 2025
IGI Report No **LG754535296**
PEAR MODIFIED BRILLIANT
9.19 X 5.43 X 3.01 MM
Carat Weight **1.05 CARAT**
Color Grade **FANCY INTENSE YELLOW**
Clarity Grade **VVS 2**
Depth **55.4%**
Table **62%**
Girdle **Thin To Thick (Faceted)**
Culet **Pointed**
Polish **VERY GOOD**
Symmetry **VERY GOOD**
Fluorescence **VERY SLIGHT**
Inscription(s) **IGI LG754535296**
Comments: This Laboratory Grown Diamond was created by Chemical Vapor Deposition (CVD) growth process. Indications of post-growth treatment.