

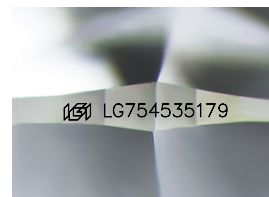
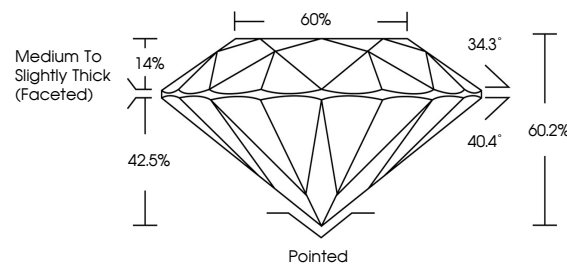


ELECTRONIC COPY

LABORATORY GROWN DIAMOND REPORT

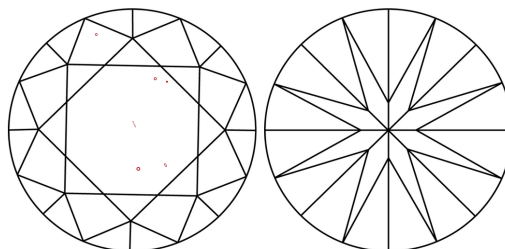
LG754535179
Report verification at igi.org

PROPORTIONS



Sample Image Used

CLARITY CHARACTERISTICS



KEY TO SYMBOLS

Red symbols indicate internal characteristics.
Green symbols indicate external characteristics.

COLOR

D E F G H I J Faint Very Light Light

CLARITY

FL	IF	VVS ¹⁻²	VS ¹⁻²	SI ¹⁻²	I ¹⁻³
Flawless	Internally Flawless	Very Very Slightly Included	Very Slightly Included	Slightly Included	Included



December 22, 2025

IGI Report Number **LG754535179**

Description	LABORATORY GROWN DIAMOND
-------------	--------------------------

Shape and Cutting Style **ROUND BRILLIANT**

Measurements	6.63 - 6.71 X 4.00 MM
--------------	-----------------------

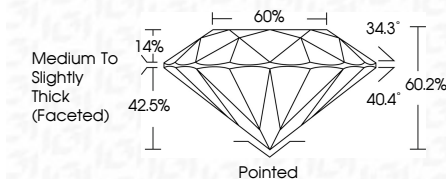
GRADING RESULTS

Carat Weight 1.10 CARAT

Color Grade	D
-------------	---

Clarity Grade VS 2

Cut Grade **IDEAL**



ADDITIONAL GRADING INFORMATION

Polish **EXCELLENT**Symmetry **EXCELLENT**Fluorescence **NONE**Inscription(s) LG754535179

Comments: This Laboratory Grown Diamond was created by Chemical Vapor Deposition (CVD) growth process.
Type IIa



© IGI 2020, International Gemological Institute

FD - 10 20



THIS DOCUMENT WAS PRODUCED WITH THE FOLLOWING SECURITY MEASURES: SPECIAL DOCUMENT PAPER, INK SCREENS, WATERMARK, BACKGROUND DESIGNS, HOLOGRAM AND OTHER SECURITY FEATURES NOT LISTED AND DO EXCEED DOCUMENT SECURITY INDUSTRY GUIDELINES

www.igi.org

December 22, 2025
IGI Report No LG754535179
ROUND BRILLIANT

6.63 - 6.71 x 4.00 MM	Carat Weight	1.10 CARAT
	Color Grade	D
	Clarity Grade	VS 2
	Cut Grade	IDEAL
	Depth	60.2%
	Table	65%
	Girdle	Medium to Slightly Thick (Faceted)
	Culet	Pointed
	Polish	EXCELLENT
	Symmetry	EXCELLENT
	Fluorescence	NONE
	Reference	4mm 1 CTW #183170

Comments:
This Laboratory Grown Diamond was created by Chemical Vapor Deposition (CVD) growth process.