



ELECTRONIC COPY

LG754526141
Report verification at igi.org



December 4, 2025

IGI Report Number LG754526141

Description LABORATORY GROWN DIAMOND

Shape and Cutting Style ROUND BRILLIANT

Measurements 8.10 - 8.15 X 5.09 MM

GRADING RESULTS

Carat Weight 2.08 CARATS

Color Grade D

Clarity Grade VVS 2

Cut Grade EXCELLENT

December 4, 2025

IGI Report Number LG754526141

Description LABORATORY GROWN DIAMOND

Shape and Cutting Style ROUND BRILLIANT

Measurements 8.10 - 8.15 X 5.09 MM

GRADING RESULTS

Carat Weight 2.08 CARATS

Color Grade D

Clarity Grade VVS 2

Cut Grade EXCELLENT

ADDITIONAL GRADING INFORMATION

Polish EXCELLENT

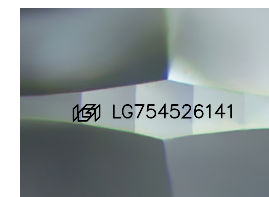
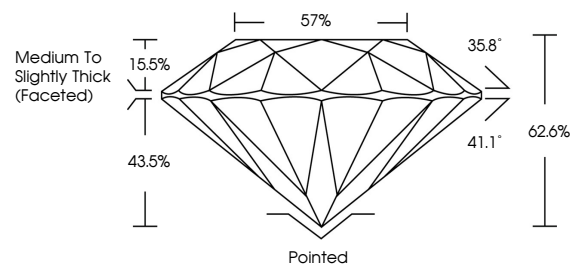
Symmetry EXCELLENT

Fluorescence NONE

Inscription(s) IGI LG754526141

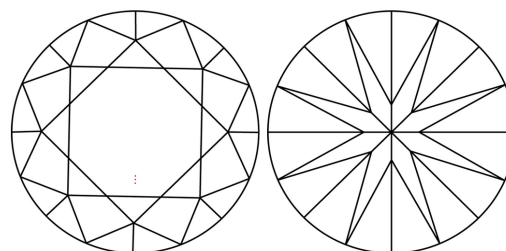
Comments: This Laboratory Grown Diamond was created by Chemical Vapor Deposition (CVD) growth process. Type IIa

PROPORTIONS



Sample Image Used

CLARITY CHARACTERISTICS



KEY TO SYMBOLS

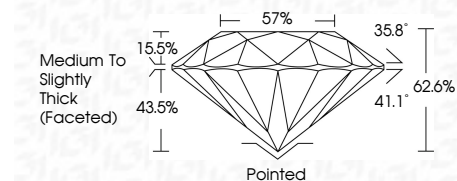
Red symbols indicate internal characteristics. Green symbols indicate external characteristics.

COLOR

D E F G H I J Faint Very Light Light

CLARITY

FL IF VVS 1-2 VS 1-2 SI 1-2 I 1-3
Flawless Internally Flawless Very Very Slightly Included Very Slightly Included Slightly Included Included



ADDITIONAL GRADING INFORMATION

Polish EXCELLENT

Symmetry EXCELLENT

Fluorescence NONE

Inscription(s) IGI LG754526141

Comments: This Laboratory Grown Diamond was created by Chemical Vapor Deposition (CVD) growth process. Type IIa



IGI



Summary of report details including date, report number, description, measurements, grading results (2.08 CARATS, D, VVS 2, EXCELLENT), and additional information (EXCELLENT Polish/Symmetry, NONE Fluorescence, IGI LG754526141 inscription).