



December 3, 2025

IGI Report Number **LG754524500**

**ROUND BRILLIANT  
LABORATORY GROWN DIAMOND**

**5.14 - 5.17 X 3.16 MM**  
Carat Weight **0.52 CARAT**  
Color Grade **E**  
Clarity Grade **VS 1**  
Cut Grade **VERY GOOD**  
Polish **VERY GOOD**  
Symmetry **VERY GOOD**  
Fluorescence **NONE**  
Inscription(s) **IGI LG754524500**

Comments: This Laboratory Grown Diamond was created by Chemical Vapor Deposition (CVD) growth process. Type IIa

**LABORATORY GROWN DIAMOND REPORT**

December 3, 2025

IGI Report Number

**LG754524500**

Description

**LABORATORY GROWN DIAMOND**

Shape and Cutting Style

**ROUND BRILLIANT**

Measurements

**5.14 - 5.17 X 3.16 MM**

**GRADING RESULTS**

Carat Weight

**0.52 CARAT**

Color Grade

**E**

Clarity Grade

**VS 1**

Cut Grade

**VERY GOOD**

**ADDITIONAL GRADING INFORMATION**

Polish

**VERY GOOD**

Symmetry

**VERY GOOD**

Fluorescence

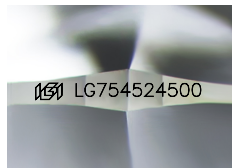
**NONE**

Inscription(s)

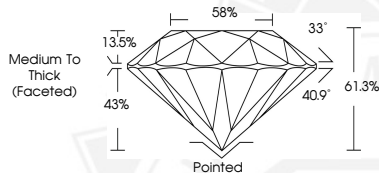
**IGI LG754524500**

Comments: This Laboratory Grown Diamond was created by Chemical Vapor Deposition (CVD) growth process.

Type IIa



Sample Image Used



December 3, 2025

IGI Report Number **LG754524500**

**ROUND BRILLIANT  
LABORATORY GROWN DIAMOND**

**5.14 - 5.17 X 3.16 MM**  
Carat Weight **0.52 CARAT**  
Color Grade **E**  
Clarity Grade **VS 1**  
Cut Grade **VERY GOOD**  
Polish **VERY GOOD**  
Symmetry **VERY GOOD**  
Fluorescence **NONE**  
Inscription(s) **IGI LG754524500**

Comments: This Laboratory Grown Diamond was created by Chemical Vapor Deposition (CVD) growth process. Type IIa



THIS DOCUMENT WAS PRODUCED WITH THE FOLLOWING SECURITY MEASURES: SPECIAL DOCUMENT PAPER, INK SCREENS, WATERMARK, BACKGROUND DESIGNS, HOLOGRAM AND OTHER SECURITY FEATURES NOT LISTED AND DO EXCEED DOCUMENT SECURITY INDUSTRY GUIDELINES.